

**Jane Parry**

---

**From:** CATS Pipeline <CATSpipeline@woodplc.com>  
**Sent:** 03 February 2021 11:23  
**To:** Jane Parry  
**Cc:** CATS Pipeline  
**Subject:** RE: Planning ApplicationR/2021/0057/VC  
**Attachments:** CAT-PPI-FRM-001 (3).docx; CAT-PPI-PRC-019.pdf

**Conduct of operations proximate to the Central Area Transmission System (“CATS”) terminal and CATS pipelines**

Good Morning,

Your above mentioned enquiry has issued a notification to us, in our capacity as operator of the CATS terminal and the CATS pipelines, that you have planned works within our area of interest. Any works or activity that have the potential to change the characteristics of the CATS pipeline corridor or present an immediate or latent threat to the CATS pipelines structural integrity within 50m of the CATS pipelines must be reviewed and assessed for safe working practices. On receipt of your information we will either confirm that there is no risk of such works infringing our CATS pipelines wayleaves or require to more generally assess the potential risk of such works to our operation. In the event that your works are within our area of interest but we consider that such works will not affect the CATS pipelines, we will grant you an “Authorisation to Work” form for your activity. Please see the attached blank example of CATS “third party works application” form CAT-PPI-FRM-001. We would appreciate if you would send the information required to complete this form in full.

The CATS pipelines have been built according to, and are managed subject to, the Health and Safety at Work Act (1974) and the associated Regulations including The Pipelines Safety Regulations 1996 (PSR) and The Pressure Systems Safety Regulations 2000 (PSSR). The operator of the CATS terminal and the CATS pipelines is a member of UKOPA, LSBUD and Linesearch. For more information on the associated businesses and pipelines please the links provided below.

I would appreciate a response even if you decide to cancel this project, so it can be closed out in our database.

Central Area Transmission System

<https://www.kellasmidstream.com/cats/hsse>



Members of UKOPA, Linewatch and LSBUD

<https://www.youtube.com/watch?v=itacNeMqEXU>

01642 546404

---

**From:** Jane Parry <Jane.Parry@redcar-cleveland.gov.uk>  
**Sent:** 26 January 2021 08:57  
**To:** CATS Pipeline <CATSpipeline@woodplc.com>  
**Subject:** Planning ApplicationR/2021/0057/VC

**CAUTION:** External email. Please do not click on links/attachments unless you know the content is genuine and safe.

Please find attached a letter from the Development Management section of Redcar and Cleveland Borough Council in connection with the above planning application. If you have any difficulties opening the attachment, please contact a member of the Planning Admin team on 01287 612344 or 01287 612471.

Kind Regards

Jane Parry  
Planning Technical Support Supervisor  
Redcar & Cleveland Borough Council

Redcar & Cleveland House  
Kirkleatham Street  
Redcar  
Yorkshire  
TS10 1RT

Tel: (01287) (61)2344

Email: [jane.parry@redcar-cleveland.gov.uk](mailto:jane.parry@redcar-cleveland.gov.uk) <<mailto:jane.parry@redcar-cleveland.gov.uk>>

Website: <http://www.redcar-cleveland.gov.uk> <<http://www.redcar-cleveland.gov.uk/>>

Please note my working days are Monday – Thursday

Government Security Markings  
NOT CLASSIFIED  
No confidential information contained.

---

We have recently updated our terms and conditions for all our services, including making some important updates to our privacy notices. To find out more about how we collect, use, share and retain your personal data, visit: [www.redcar-cleveland.gov.uk/dataprivacy](http://www.redcar-cleveland.gov.uk/dataprivacy) If you wish to stop receiving emails and unsubscribe from this Council email account, then please reply to this email and let us know. We will need your name and address to amend our records. If we must contact you in the future, we will write to your postal address.

This email and any files transmitted with it are intended solely for the named recipient and may contain sensitive, confidential or protectively marked material up to the central government classification of "RESTRICTED" which must be handled accordingly. If you have received this e-mail in error, please immediately notify the sender by e-mail and delete from your system, unless you are the named recipient (or authorised to receive it for the recipient) you are not permitted to copy, use, store, publish, disseminate or disclose it to anyone else.

E-mail transmission cannot be guaranteed to be secure or error-free as it could be intercepted, corrupted, lost, destroyed, arrive late or incomplete, or contain viruses and therefore the Council accept no liability for any such errors or omissions.

Unless explicitly stated otherwise views or opinions expressed in this email are solely those of the author and do not necessarily represent those of the Council and are not intended to be legally binding.

All Council network traffic may be subject to recording and/or monitoring in accordance with relevant legislation.

Redcar & Cleveland Borough Council, Redcar & Cleveland House, Kirkleatham Street, Redcar, TS10 1RT, Tel: 01642 774 774, Website: [www.redcar-cleveland.gov.uk](http://www.redcar-cleveland.gov.uk)

---

This message is the property of John Wood Group PLC and/or its subsidiaries and/or affiliates and is intended only for the named recipient(s). Its contents (including any attachments) may be confidential, legally privileged or otherwise

protected from disclosure by law. Unauthorized use, copying, distribution or disclosure of any of it may be unlawful and is strictly prohibited. We assume no responsibility to persons other than the intended named recipient(s) and do not accept liability for any errors or omissions which are a result of email transmission. If you have received this message in error, please notify us immediately by reply email to the sender and confirm that the original message and any attachments and copies have been destroyed and deleted from your system.

If you do not wish to receive future unsolicited commercial electronic messages from us, please forward this email to: [unsubscribe@woodplc.com](mailto:unsubscribe@woodplc.com) and include "Unsubscribe" in the subject line. If applicable, you will continue to receive invoices, project communications and similar factual, non-commercial electronic communications.

Please click <http://www.woodplc.com/email-disclaimer> for notices and company information in relation to emails originating in the UK, Italy or France.

As a recipient of an email from a John Wood Group Plc company, your contact information will be on our systems and we may hold other personal data about you such as identification information, CVs, financial information and information contained in correspondence. For more information on our privacy practices and your data protection rights, please see our privacy notice at <https://www.woodplc.com/policies/privacy-notice>

---



## CATS Wayleaves Guidance for Landowners and Third Parties

Doc Number: CAT-PPI-PRC-019

C2	04/11/19	04/11/24	Reviewed and updated	KB	DH/GR	KB
C1	02/03/16	02/03/19	Issued for Approval	KB	GD	JB
REV	DATE	NEXT REVIEW	DESCRIPTION	BY	CHKD	APPVD

## CONTENTS

<b>1.0</b>	<b>INTRODUCTION .....</b>	<b>3</b>
<b>2.0</b>	<b>CONTACT DETAILS.....</b>	<b>4</b>
<b>3.0</b>	<b>RESPONSIBILITIES &amp; ADVICE .....</b>	<b>5</b>
<b>4.0</b>	<b>NOTIFIABLE WORKS .....</b>	<b>6</b>
<b>5.0</b>	<b>TYPICAL QUESTIONS AND ANSWERS .....</b>	<b>6</b>
<b>6.0</b>	<b>EMERGENCY PROCEDURES .....</b>	<b>10</b>

## 1.0 INTRODUCTION

The CATS Pipelines referred to below were constructed and are operated under the terms of the Pipelines Act 1962 and Pipeline Safety Regulations 1996. They are owned by CATS Parties and operated by Wood UK Ltd. The Pipelines are essential links in the transportation of Natural Gas, Butane, Propane and Natural Gas Liquids from the North Sea to the Terminal, National Grid and local customers. This booklet provides general guidance on working close to these pipelines and answers some of the questions commonly asked by landowners, tenants, contractors and others.

Please visit <https://www.kellasmidstream.com/cats/> for more information

The pipelines in this booklet are:

- **PL-774** 36" High pressure gas pipeline transporting offshore natural gas from the North Sea to Coatham Sands and 7.84 km onshore to Seal Sands via a Tees Tunnel.
- **PL-937** 6" Condensate export pipeline transporting condensate 2.87km from the CATS Terminal to SABIC North Tees plant.
- **PL-938** 6" Condensate export pipeline transporting condensate 2.45km from the CATS Terminal to the Navigator Terminals storage site.
- **CAT-Pipeline-04** 6" Propane pipeline transporting propane 1.09km from the CATS Terminal to Conoco Phillips storage site.
- **CAT-Pipeline-05** 6" Butane pipeline transporting butane 1.09km from the CATS Terminal to Conoco Phillips storage site.



Construction Images of the 36" pipeline routing through South Tees industrial sites



Construction Images of 6" exports in various locations in Seal Sands

## 2.0 CONTACT DETAILS

The day to day management of activities within the pipeline wayleave is implemented at the CATS Terminal. The pipeline wayleave being defined as the 3.5m to 7.5m wide strip of land either side of the CATS pipeline. The width varies depending on the landowner and location of the pipeline, for more information regarding the location of your work please contact CATS Terminal. It is a requirement by the pipeline operator that if you plan any works within 50m of the pipeline you must contact us to receive confirmation the pipeline will be unaffected by your work.

By using the free online LineSearchBeforeUDig enquiry process you will find out if your work location is within 50m of CATS pipelines. It's also important to note that this free service also notifies you of other assets nearby owned and operated by others.

It is important that any notifiable activities are brought to the CATS pipelines team attention to start the enquiry process. Upon receipt of your information the CATS terminal will provide you with Authorisation to Work.

LineSearchBeforeUdig: <https://www.linesearchbeforeudig.co.uk/>

Email address: **CATSpipeline@woodplc.com**

Switchboard telephone: **01642 546404**

CATS Terminal,  
Seal Sands,  
Middlesbrough  
TS2 1UB



### 3.0 RESPONSIBILITIES & ADVICE

The Health and Safety Executive place responsibilities on both CATS Terminal and the landowners along CATS pipeline routes to ensure the continued safe operation of CATS underground pipelines.

The greatest threat to CATS pipelines is accidental damage resulting from 3rd party works and in this respect CATS Terminal takes reasonable and practical steps to reduce this risk. A number of risk reduction measures are in place including regular foot, road and aerial surveillance.

CATS Terminal also approves and directly supervises all works that may impact upon pipelines and request notification of any proposed works within 50m of a pipeline that could move within the pipeline wayleave.

It is the responsibility of landowners to advise CATS Terminal of any works proposed by contractors that could result in potential damage to the CATS pipelines.

It is the responsibility for all landowners, works sponsors, works managers, contractors and employees to make sure HSG47 is followed and that you have taken reasonable steps under the Health and Safety at Work act to keep people and underground pipelines safe. If you are not sure if the minimum searches or notifications have been completed before starting your work, then stop and ask.

It is always good practice to keep a pack of responses from those pipeline operators you have contacted at your work site, during your approved works. CATS always issue confirmation that you have been through our consultation process and can proceed with your works. Pipeline operators often challenge works in close proximity to pipelines and this information will be helpful to confirm you have received the required approvals.



## 4.0 NOTIFIABLE WORKS

Any activity that involves excavation, vehicular or service crossings, or landscaping or other work close to the pipeline that could affect pipeline integrity including ditching or fencing should be notified to CATS Terminal. Our wayleaves members will discuss the proposal with you in detail, and any conditions or restrictions needed to protect the pipeline will be advised.

No work should start near a CATS pipeline until a short consultation has taken place. CATS representative may request a site meeting to locate and peg out the route of the pipeline for your works.

This requirement includes emergency works and CATS Terminal understand that local contractors require immediate support for emergency works and will respond immediately when emergencies are declared.

If any works are required within the wayleave the CATS representative will refer to our additional restrictions and guidance documentation. This will often result in additional CATS mitigation such as supervision for your works, performing only hand digging, using load spreading mats etc.

Request a copy of Conditions and Restrictions for Work Activities in Close Proximity to CATS Pipelines document number: CAT-PPI-PRC-020 for more information.

**IF IN DOUBT - PLEASE CALL 01642 546404**



## 5.0 TYPICAL QUESTIONS AND ANSWERS

Q. What do CATS pipelines carry?

- The 36" CATS pipeline (PL-774) transports high pressure natural gas 411.84km (404km subsea, 7.84km onshore) from the CATS Riser Platform, located in the Central Graben Development of the North Sea, to processing facilities at the CATS Terminal in Teesside.
- Onshore 6" Condensate export pipeline (PL-937) transporting natural gas condensate 2.87km from the CATS Terminal to Sabic, North Tees plant.
- Onshore 6" Condensate export pipeline (PL-938) transporting natural gas condensate 2.45km from the CATS Terminal to the Navigator Terminals storage site.
- Onshore 6" Propane pipeline (CAT-Pipeline-04) transporting Propane 1.09km from the CATS Terminal to ConocoPhillips storage site.

- Onshore 6" Butane pipeline (CAT-Pipeline-05) transporting Butane 1.09km from the CATS Terminal to ConocoPhillips storage site.

Q. Why do we need to contact CATS terminal?

A. The HSE requires you to perform searches and understand what dangers there are when working near underground services. An example of the legislation you must follow is HSG47, this can be searched on the HSE website. Due to the complex nature of the CATS infrastructure and assets only the CATS pipeline engineers have the design information to advise you of what is acceptable before starting your proposed work.

Q. Why do CATS want to do this consultation process?

A. As a responsible operator CATS terminal has an obligation to safeguard people and the environment from any potential pipeline incident. Operators can't monitor the entire pipeline route 24 hours per day, so they mark the pipeline route and provide the public with free services to ensure they receive health and safety advice.

Q. What's a notifiable activity?

A. Anything that might change the ground conditions such as loading the ground with crane outriggers, crossing with vehicles, hand digging or machine digging, ditching, demolition, drainage fencing, dumping materials, landscaping, storage of temporary materials, equipment or people. If in doubt, just ask and we can provide more examples.

Q. How close do I need to be before I contact you?

A. CATS pipeline operators follow UKOPA guidance for a 50m notification distance between your proposed works to the Pipeline. Marker Posts are not always directly above the pipeline and we'll quickly tell you whether your type of work is close enough for us to require a detailed review. CATS terminal takes a very pragmatic view on distances and impact from work types.

Q. How do I contact you?

A. See section 2.0 Contact Details for various ways to contact us.

Q. I need to press on with my project, how long will this take?

A. CATS operator do not intend to unnecessarily delay your work, they only care about the safety of people and the safe operation of our pipeline. The operators initially respond within 24 hours and aim to close out all enquiries within 4 weeks but have often been able to close out much quicker than this. To avoid impact on your project schedule. We advise that early engagement is better, even if you don't have all the detail yet.

Q. Do I need to setup a legal agreement?

A. Depending on the nature of your works the CATS Pipeline owner may want to enter into a commercial agreement. We will inform the legal team of your intended works and we will receive confirmation whether they want to start a legal consultation and discuss liabilities. Third Parties progressing work without a required legal agreement resulting in damage or loss incurred by CATS operations will be pursued by CATS owners with unlimited liability.

Q. I'm just a small contractor, this minor job isn't worth pursuing if enquiries are expensive?

A. CATS pay for you to use LSBUD service for free. CATS do not charge for enquiries or site visits. There should be no cost involved for you to notify us of your proposed work. Only large construction projects that may require CATS terminal to complete engineering studies or provide additional resources may be back charged.

Q. Can't you just have one set of rules for the entire pipeline length?

A. Unfortunately certain areas are at more risk than others due to environmental conditions, changing in ground cover or recent development of land. It would be unfair to put restrictive conditions on areas of land where the pipeline is more protected. Therefore, we commit more review time at no cost to third parties to ensure we only request what we consider to be necessary for ensuring safety.

Q. How long have the pipelines been operational?

A. The 36" CATS pipeline operating safely and continuously since its installation in 1993. The export lines to SABIC, Conoco Phillips and Navigator Terminals have been operating safely and continuously since their installation in 1996.

Q. How do I know where a pipeline is located across my land?

A. All pipelines are clearly identified at crossings (road, rail and river) by markers and with aerial markers. However, do not assume that the pipeline is routed in a direct line between the markers. If you wish to start an activity, then please contact CATS Terminal so we can show you where the pipeline is.

Q. How deep are the pipelines?

A. The landlines were installed with a varied amount of cover and this has been recorded in technical documentation. However, in some locations, the cover may have been reduced by factors such as soil erosion, and it is therefore not always safe to assume that the full cover is present. In reclaimed land of an industrial nature, especially Teesside, the cover is often significantly less than anticipated and in parts may only be less than 1m. Please note, if you have completed trial digs down to normal service depths, the CATS pipelines may be below this point and without confirming with CATS terminal you could strike a pipeline.

Q. How can CATS Terminal help?

A. If you are planning an activity, we can help at the earliest stages in defining any restrictions or conditions that might be needed to protect the pipeline. Then when you are about to start a job, we

can accurately mark the position of the pipeline and supervise any operations close to it to ensure these are performed safely.

Q. Who will issue permission to proceed with my work?

A. The CATS Terminal Operations Team control all Authorisation to Work forms and on the day your works start you will have a set of instruction to request your permission. There will also be instructions on how to close out your job, as we need to know when you have finished. These instructions are explained during the enquiry process.

Q. Why do I need to report any damage to CATS Terminal?

A. Any physical damage to the pipeline may result in a major incident. It must be inspected to check whether a repair is required or to reinstate the corrosion protection coating system. Please note accidental damage is a serious incident and must be reported, see section 6.0 for more information.

Q. Are maps and pipeline route details available?

A. Yes, the route of CATS pipelines can be provided on various scale Ordnance Survey maps in paper or digital form from our Geographical Information System. However, it's possible for third parties to incorrectly interpret these so we request you first confirm your work location with an Easting and Northern number set, and we can make a bespoke map for your work that includes our pipelines and wayleave location. There are free online services for getting your work site location data such as: <https://gridreferencefinder.com/>

Q. Why are you issuing this booklet?

A. The Pipelines Safety Regulations 1996 place a duty on pipeline operators to supply information on the existence and whereabouts of their pipelines. We are always looking for new ways to raise awareness of the pipelines.

Q. I'd like more information, are you able to help?

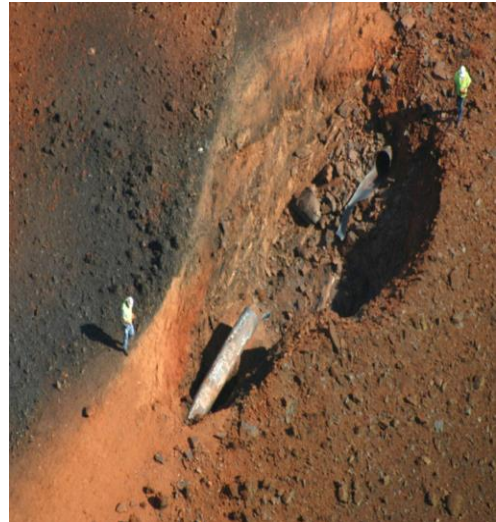
A. The CATS terminal has developed an annual awareness campaign and this ranges from one-to-one meetings with landowners, asset owners, neighbours and local planning authorities. We provide awareness presentations and can arrange one for you or your contractors free of charge. Just contact us in the same way you would raise a works enquiry.

Please remember, although you may not have work planned yet; we can send you copies of this document to hand out to your colleagues to raise awareness, helping you avoid any delays.

## 6.0 EMERGENCY PROCEDURES

1. Shut down any machinery and other sources of ignition.
2. Evacuate all personnel from the vicinity immediately.
3. Keep moving upwind of the incident.
4. Notify immediately - **The Police 999**

**CATS Terminal 01642 546404**



Please note: Shut down all working plant and machinery in the vicinity of a pipeline strike (within 350 meters) of the incident and ensure there are no other potential sources of ignition in the vicinity.

Prevent the approach of traffic or any other unauthorised persons.

Wait for a representative from CATS or the Police to arrive on site and ensure that assistance is given as required safeguarding People, the Environment and Property.

**N.B. IN THE EVENT OF A CATS PIPELINE LEAK OCCURRING OBSERVE THE ABOVE PRECAUTIONS BUT DO NOT ATTEMPT TO STOP THE LEAK**



36" Gas Pipeline Explosion, North Texas June 7, 2010

# Third party works request



<b>THIRD PARTY PROJECT TITLE:</b>	
<b>PROJECT FINANCIER:</b>	
<b>REFERENCE NUMBER:</b>	
<b>CONTRACTOR NAME:</b>	
<b>LANDOWNER CONTACT:</b>	
<b>LOCATION:</b>	
<b>NORTHERN/EASTING:</b>	
<b>START AND END DATES OF ACTIVITY:</b>	

**Summary of Works**

In this section you should summarise the works, whether it's excavation, lifting, pressure tests, new buildings, increased traffic, new road, rail or service crossings etc.

Use maps, drawings and photographs at your disposal to ensure those signing an Authorisation to Work form will be informed on the project details and steps.

Ensure all supporting works have also been included such as storage of materials, work routes and escape plans.

Ensure the third party is aware of adjacent sites and actions in the event of any alarms (note: some events on neighbouring sites will affect work parties outside fences).

Ensure you have agreement from the third party that nothing has been missed and it accurately depicts the work.

Provide a list of all reference material provided to support this application, pass them to the pipelines team if they request copies. Ensure all reference material is stored within the wayleave Third Party Project folder under the relevant project name.

**Third Party Enquiry Checklist**

The contractor has provided a workpack containing list of activities	YES	NO
The contractor has provided Northern/Easting location information for all work areas	YES	NO
The contractor had provided drawings to show the location of activities and their boundaries and has included distances from major reference points/landmarks	YES	NO

# Third party works request



The contractor has provided a list of Vehicles, machinery, storage and all temporary installations have been identified and located	YES	NO
<b>Activity Checklist A</b>		
Excavations within 50m of pipeline, without any physical barrier such as fence lines or buildings	YES	NO
Excavations within pipeline wayleave	YES	NO
Lifting operations above wayleave (either above or below ground CATS pipeline)	YES	NO
Hot work within wayleave (either above or below ground CATS pipeline)	YES	NO
Increased traffic over wayleave	YES	NO
Pressure Testing within wayleave	YES	NO
Exclusion zone within wayleave	YES	NO
<b>Activity Checklist B</b>		
Pressure Test and / or Exclusion zone in close proximity to CATS pipelines	YES	NO
Increase/decrease in land drainage within 50m of CATS pipeline	YES	NO
Changes in the level of cover over a buried pipeline	YES	NO
Interference with Pipeline equipment such as MP, CP posts, BVS	YES	NO
New buildings or storage within 50m of CATS pipeline	YES	NO
Temporary building nearby, storage or materials	YES	NO
Hot work within CATS 50m area of interest	YES	NO
Installation of HV cabling near wayleave (cathodic protection interference)	YES	NO
<b>Approvals Section</b>		
Third Party Enquiry Checklist; Approval from Wayleave Specialist		
Signed _____		
Name _____		
Job Title _____		
Date _____		