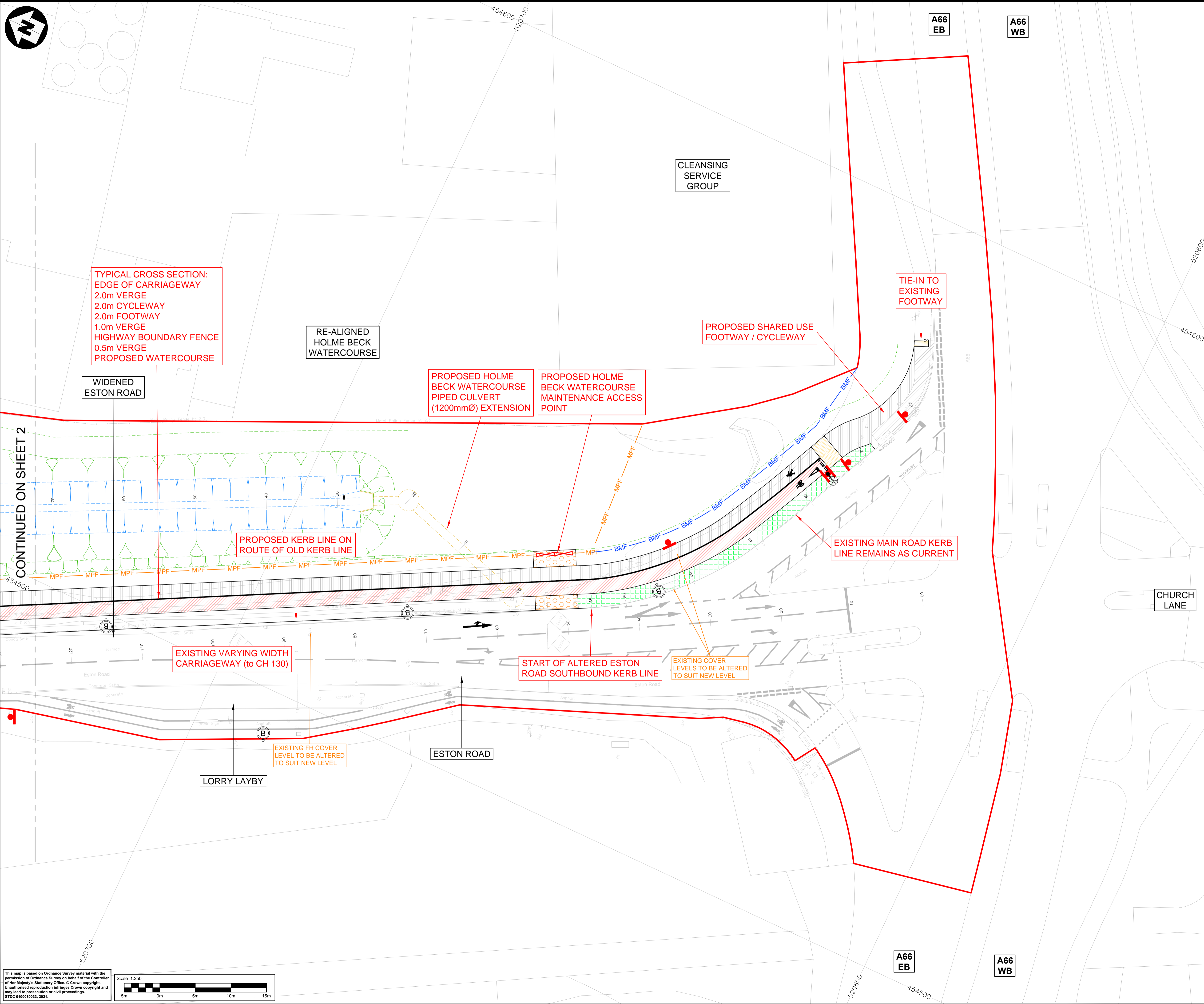


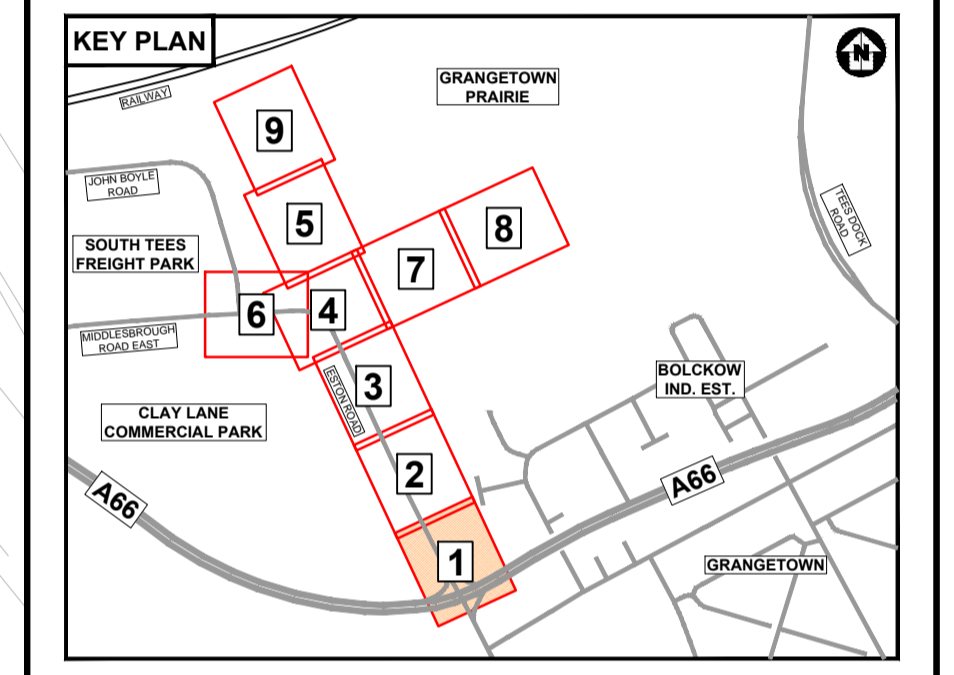
DO NOT SCALE

Millimetres

0 10



- NOTES:**
- FOR GENERAL ARRANGEMENT KEY & NOTES REFER TO DRAWING: STDC_HWY-ATK-HGN-PR-DR-CH-000001.
- GENERAL KEY:**
- PROPOSED HIGHWAY ALIGNMENT CHAINAGE MARKERS
 - ROAD EDGE, FOOTWAY & CYCLEWAY & TACTILES
 - VERGE & EMB./CUT. (STANDARD 1 in 3 SLOPE)
 - VERGE & EMB./CUT. (GRADED OUT SLOPE)
 - RE-ALIGNED HOLME BECK WATERCOURSE AND HOLME BECK CULVERTS
 - PLANNING APPLICATION RED LINE BOUNDARY
- FENCING & GATES KEY:**
- METAL PALISADE FENCE (2.4m High)
 - TIMBER POST & 4 RAIL FENCE (1.4m High)
 - TIMBER BIRDS MOUTH FENCE (0.65m High)
 - METAL PALISADE SECURITY GATES (2.4m High)
 - SINGLE LEAF TIMBER FIELD GATE (1.4m High)
- FOOTWAYS & PAVED AREAS KEY:**
- BLISTER TACTILE PAVING (CROSSING POINTS)
 - BARFACED TACTILE PAVING (BUS STOPS)
 - CYCLEWAY / FOOTWAY / HAZARD TACTILE PAVING
 - ANTI-PEDESTRIAN / BLOCK PAVING
 - CYCLEWAY SURFACING (COLOURED)
 - NEW FOOTWAY SURFACING / RE-SURFACED AREAS
 - GRASSCRETE (OR SIMILAR) SURFACING
- ROAD MARKING & TRAFFIC SIGNS KEY:**
- EXISTING MARKINGS & SYMBOLS
 - DASHED MARKINGS / SOLID MARKINGS
 - CYCLEWAY, PEDESTRIAN, GIVE WAY SYMBOLS (WHITE)
 - BUS LAYBY MARKINGS & SYMBOLS (YELLOW)
 - SIGN LOCATION
 - BUS STOP LOCATION
- STREET LIGHTING KEY:**
- STREET LIGHTING COLUMN POSITIONS (TYPE A,B,C)



Description	Status	Revision	Drawn	Checked	Reviewed	Authorised	Issue Date
INITIAL VERSION	A1	CO1	MT	DS	MT	DS	09/10/20
ISSUED FOR REVIEW & COMMENT	S3	P02	MT	DS	DMA	---	05/02/21
ISSUED FOR PLANNING	A1	CO2	MT	DS	MT	DS	18/03/21

APPROVED - PUBLISHED A1

ATKINS
 Member of the SNC-Lavalin Group
 Dunedin House
 Columbia Drive
 Stockton-on-Tees
 Cleveland
 TS17 6BJ
 Tel: +44 (0)1642 525200
 Copyright © Atkins Limited (2021) www.atkinsglobal.com

Client
STDC
 Teesside Management Offices,
 Redcar, TS10 5QW
 www.southteesdc.com

South Tees Development Corporation

Project Title
 SOUTH TEES DEVELOPMENT CORPORATION

Drawing Title
 DETAILED DESIGN of ESTON ROAD HIGHWAYS SCHEME GENERAL ARRANGEMENT

Drawing Number STDC_HWY - ATK - HGN - PR	Originator ATK - HGN - PR	Volume - DR - CH - 000002
Location A1	Scale 1:250	Project Ref. No. 5198022
Sheet 1 of 9	Rev. C02	

This map is based on Ordnance Survey material with the permission of Ordnance Survey on behalf of the Controller of Her Majesty's Stationery Office. © Crown copyright. Unauthorised reproduction infringes Crown copyright and may lead to prosecution or civil proceedings.
 STDC 18/03/2021, 2021.

Scale 1:250