

---

**LM Wind, Teesside  
Design and Access Statement**

Project number  
Date  
Author  
Checked by

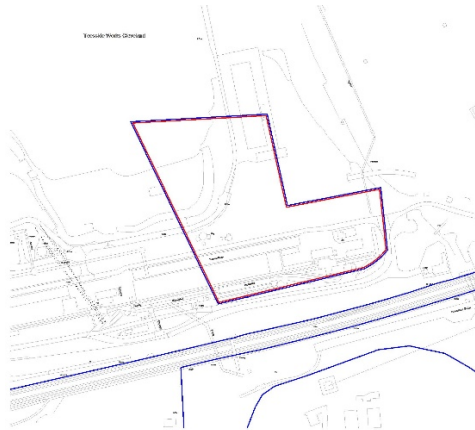
**10548**  
**28 May 2021**  
**Jonny Seebacher**  
**Charlotte Thompson**

---

## 1.0 Introduction

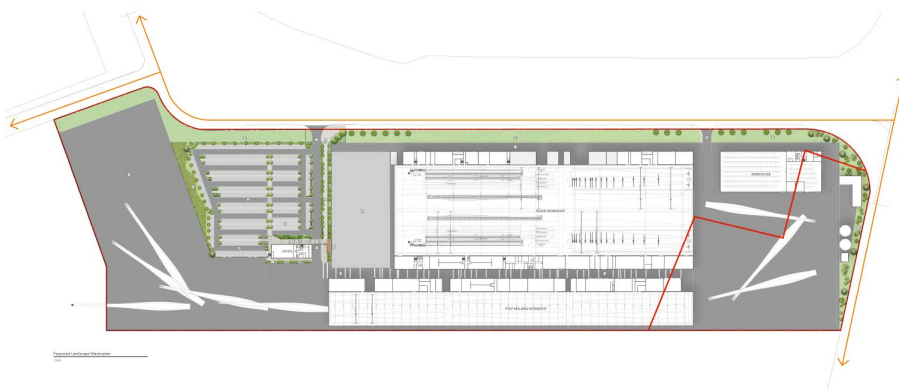
This Design & Access Statement has been prepared by Ryder in support of an full application for the LM Wind Plant situated on Land at South Tees, Redcar – The proposed site is located approximately 6km to the west of Redcar and approximately 8km from the east of Middlesbrough. The site is bound by the River Tees to the North West of the site with two existing access points located on Tees Dock Road.

The are of land requiring full planning is 2.97 HA as highlighted on the plan below:



## 2.0 Access

The main access point to the proposed site will be located along Dockside road travelling East towards the western site boundary. This new proposed access point will see the existing roundabout extended to create a new route off the roundabout and into the development site.



## 3.0 Design

The designs of the LM Plant in line with their global branding compliments the wider aspirations for the Southbank area. A steel frame with high quality cladding with varied colours and associated signage. The same materials will be used across the all the buildings on the site to bring unity to the whole development.

