

TS10 1RT

Advice : HSL-210621160631-321 DO NOT ADVISE AGAINST

Your Ref: R/2021/0473/ESM & R/2021/0465/FFM

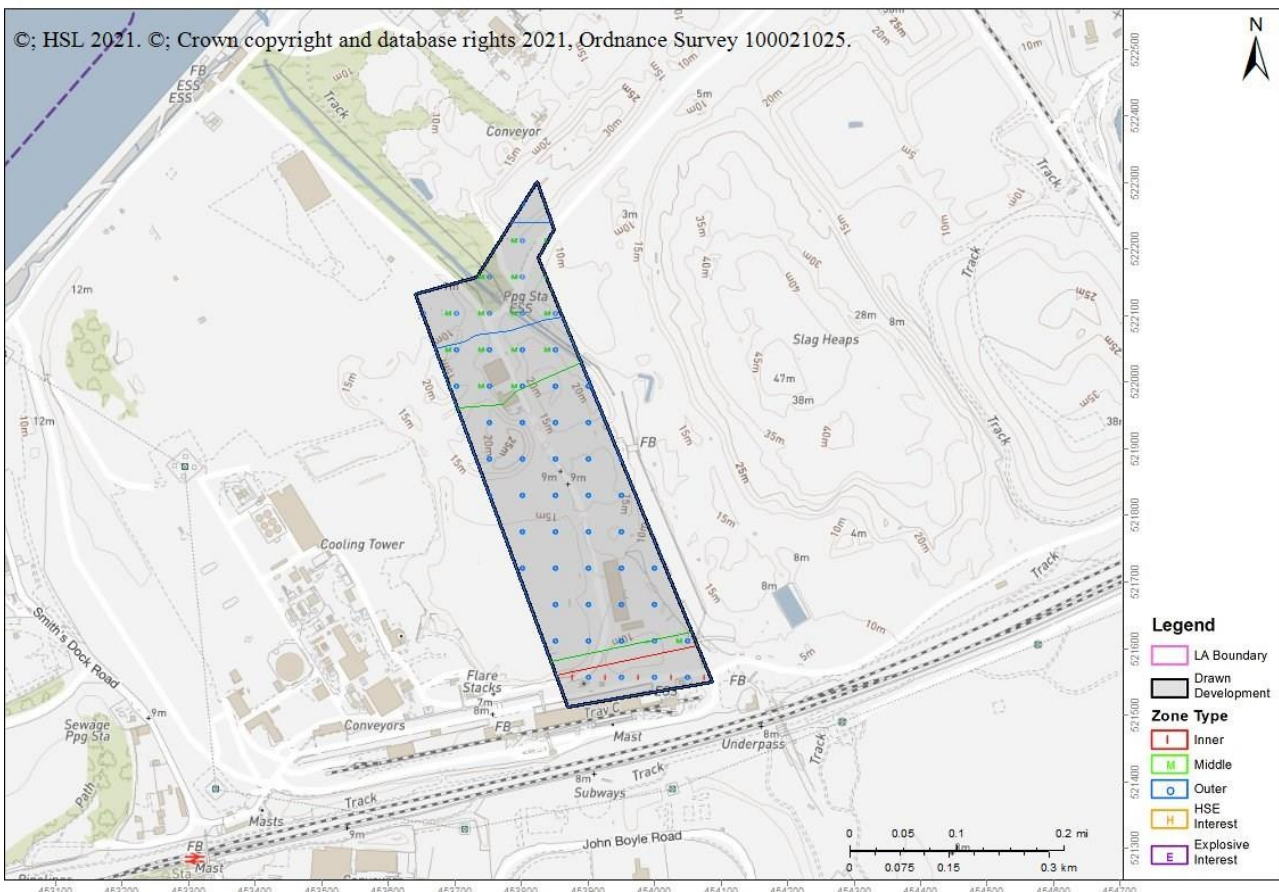
Development Name: LAND AT SOUTH TEES DEVELOPMENT CORPORATION EAST OF SMITHS DOCK ROAD AND WEST OF TEES DOCK ROAD SOUTH BANK

Comments: RESERVED MATTERS APPLICATION FOR 76,200 SQM FLOOR SPACE FOLLOWING APPROVAL OF OUTLINE PLANNING PERMISSION R/2020/0357/OOM AND ERECTION OF 3,396SQM OF B2/B8 FLOORSPACE INCLUDING WASTE STORAGE AREA, INSTALLATION OF SPRINKLER TANK AND ASSOCIATED PLANT, CREATION OF HARDSTANDING AND LANDSCAPING WORKS

Land Use Planning Consultation with Health and Safety Executive [Town and Country Planning (Development Management Procedure) (England) Order 2015, Town and Country Planning (Development Management Procedure) (Wales) Order 2012, or Town and Country Planning (Development Management Procedure) (Scotland) Regulations 2013]

The Health and Safety Executive (HSE) is a statutory consultee for certain developments within the Consultation Distance of Major Hazard Sites/ pipelines. This consultation, which is for such a development and is within at least one Consultation Distance, has been considered using HSE's planning advice web app, based on the details input on behalf of Redcar and Cleveland (B).

HSE's Advice: Do Not Advise Against, consequently, HSE does not advise, on safety grounds, against the granting of planning permission in this case.



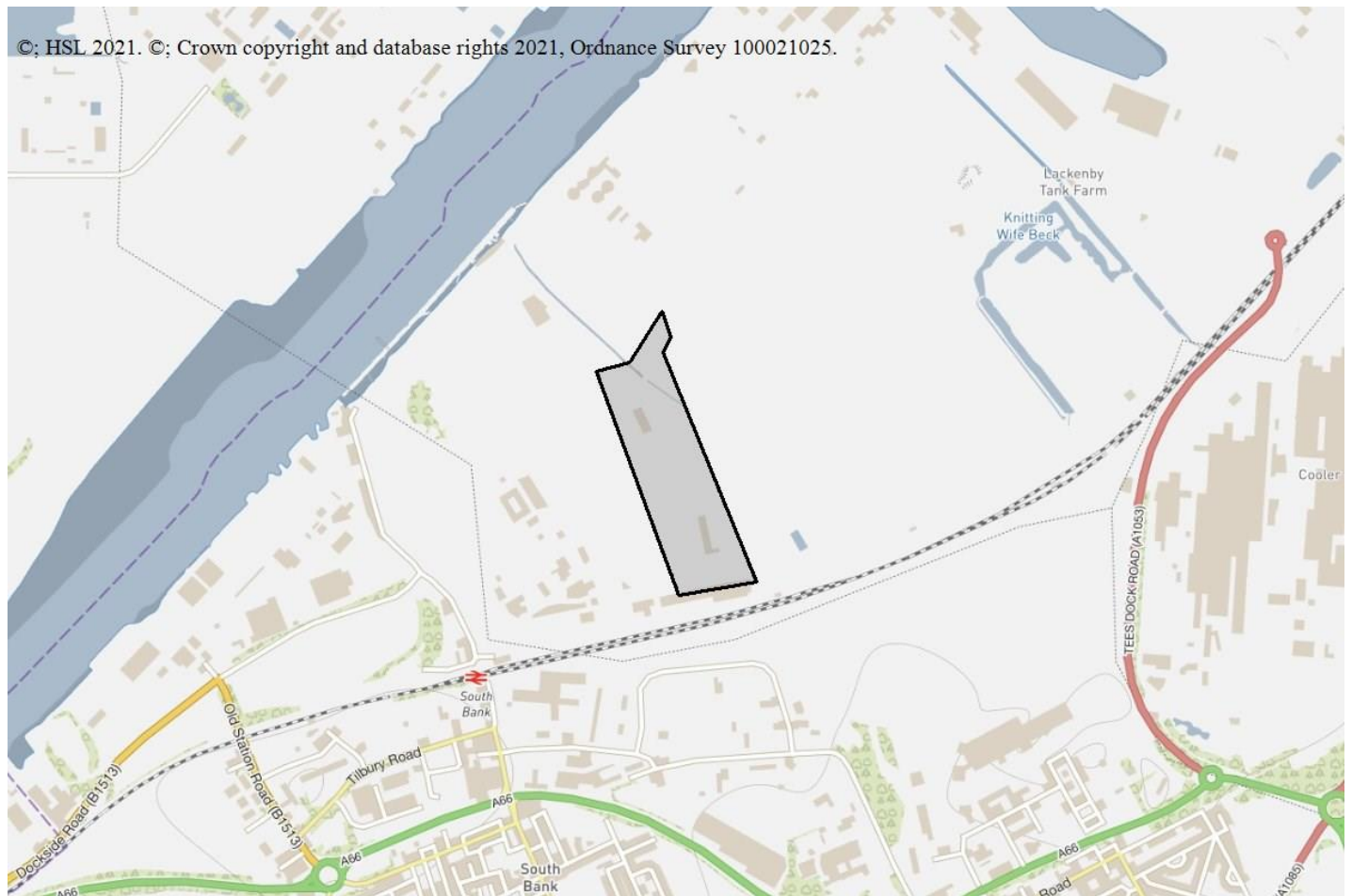
Breakdown:

Workplaces : Do Not Advise Against

Is it a workplace specifically for people with disabilities, e.g. sheltered workshops? No

Are there 100 or more occupants in any individual workplace building (that lie partly or wholly within a consultation distance)? No

Are there 3 or more occupied storeys in any workplace building (that lie partly or wholly within a consultation distance)? No



Unidentified Pipelines

There is at least one unidentified pipeline in this Local Authority Area. You may wish to check with the pipeline operator where known or the Local Authority before proceeding. The details HSE have on record for these pipelines is as follows:

- 4440193_ Sabic UK Petrochemicals Ltd North Tees to Olefins 6

This advice report has been generated using information supplied by Lynne Aspery at Redcar and Cleveland (B) on 21 June 2021.

Note that any changes in the information concerning this development would require it to be re-submitted.