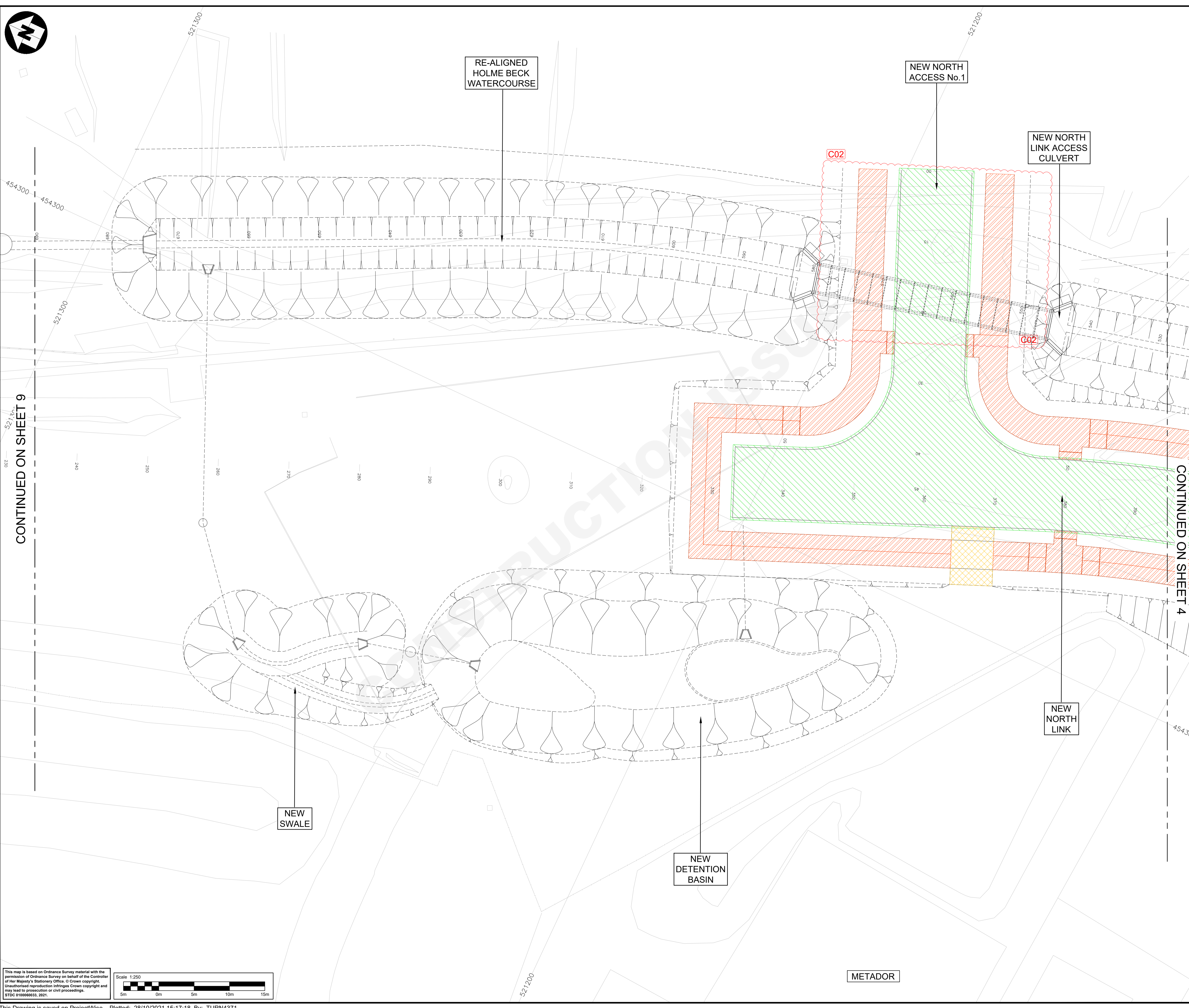


DO NOT SCALE

100
0 10
Millimetres

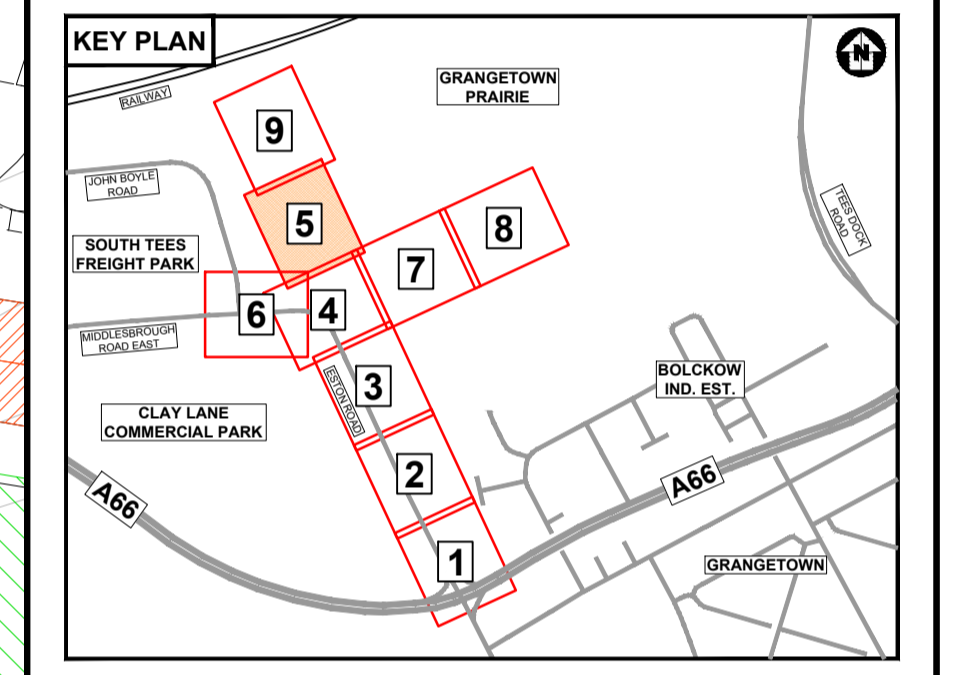


CONTINUED ON SHEET 9

CONTINUED ON SHEET 4

- NOTES:**
- FOR FURTHER DETAILS OF ROAD PAVEMENT AREAS AND CONSTRUCTION DETAILS REFER TO DRAWINGS: STDC_HWY-ATK-HPV-PR-DR-CH-000001 STDC_HWY-ATK-HPV-PR-DR-CH-000002 to 10 STDC_HWY-ATK-HPV-PR-DE-CH-000001 & 02
 - FOR FURTHER DETAILS OF FOOTWAYS AND PAVED AREAS AND CONSTRUCTION DETAILS REFER TO DRAWINGS: STDC_HWY-ATK-HKF-PR-DR-CH-000001 STDC_HWY-ATK-HKF-PR-DR-CH-000002 to 10 STDC_HWY-ATK-HKF-PR-DE-CH-000001 to 07

- KEY:**
- FOOTWAYS, CYCLEWAYS & MAINTENANCE ACCESSES:**
- 50mm REGULATING LAYER OF TYPE 1 SUB-BASE UNDER RE-SURFACED EXISTING FOOTWAYS
 - 150mm MIN. OF TYPE 1 SUB-BASE UNDER PROPOSED FOOTWAYS / CYCLEWAYS & TACTILE PAVING
 - 225mm MIN. OF TYPE 1 SUB-BASE UNDER PROPOSED MAINTENANCE ACCESS CROSSINGS
- CARRIAGEWAY NARROW WIDENING:**
- 300mm MIN. OF TYPE 1 SUB-BASE UNDER PROPOSED PAVEMENT NARROW WIDENING
- CARRIAGEWAY NEW FULL DEPTH CONSTRUCTION:**
- 420mm MIN. OF TYPE 1 SUB-BASE UNDER PROPOSED PAVEMENT (BASED ON CBR OF 2.5%)
- CARRIAGEWAY RECONSTRUCTION:**
- AV. 200mm TYPE 1 SUB-BASE IN AREA OF FULL DEPTH REMOVAL OF EXISTING TAR BOUND PAVEMENT
 - AV. 300mm TYPE 1 SUB-BASE
 - AV. 400mm TYPE 1 SUB-BASE
 - AV. 500mm TYPE 1 SUB-BASE
 - AV. 600mm TYPE 1 SUB-BASE
 - AV. 700mm TYPE 1 SUB-BASE
 - AV. 750mm TYPE 1 SUB-BASE



Description	Status	Revision	Drawn	Checked	Reviewed	Authorised	Issue Date

UPDATED FOR DESIGN CHANGES FOR CONSTRUCTION ISSUE

Status	Revision	Drawn	Checked	Reviewed	Authorised	Issue Date
A3	C01	MT	DS	MT	DS	21/05/21

UPDATED LAYOUT AT NORTH LINK ACCESS

Status	Revision	Drawn	Checked	Reviewed	Authorised	Issue Date
A3	C02	MT	DS	MT	DS	28/10/21

Drawing Suitability	Status
APPROVED - CONSTRUCTION	A3

ATKINS
 Member of the SNC-Lavalin Group
 Dunedin House
 Columbia Drive
 Stockton-on-Tees
 Cleveland
 TS17 6BJ
 Tel: +44 (0)1642 525200
 Copyright © Atkins Limited (2021) www.atkinsglobal.com

TEESWORKS
 The UK's largest industrial zone

Client: SOUTH TEES DEVELOPMENT CORPORATION

Drawing Title: DETAILED DESIGN of ESTON ROAD HIGHWAYS SCHEME PAVEMENTS & FOOTWAYS SUB-BASE THICKNESS

Drawing Number	Project	Originator	Volume
STDC_HWY - ATK - HPV - PR - DR - CH - 000025			
Location	Type	Role	Number
Original Size: A1	Scale: 1:250	Project Ref. No.: 5198022	Sheet: 5 of 9
			Rev: C02

