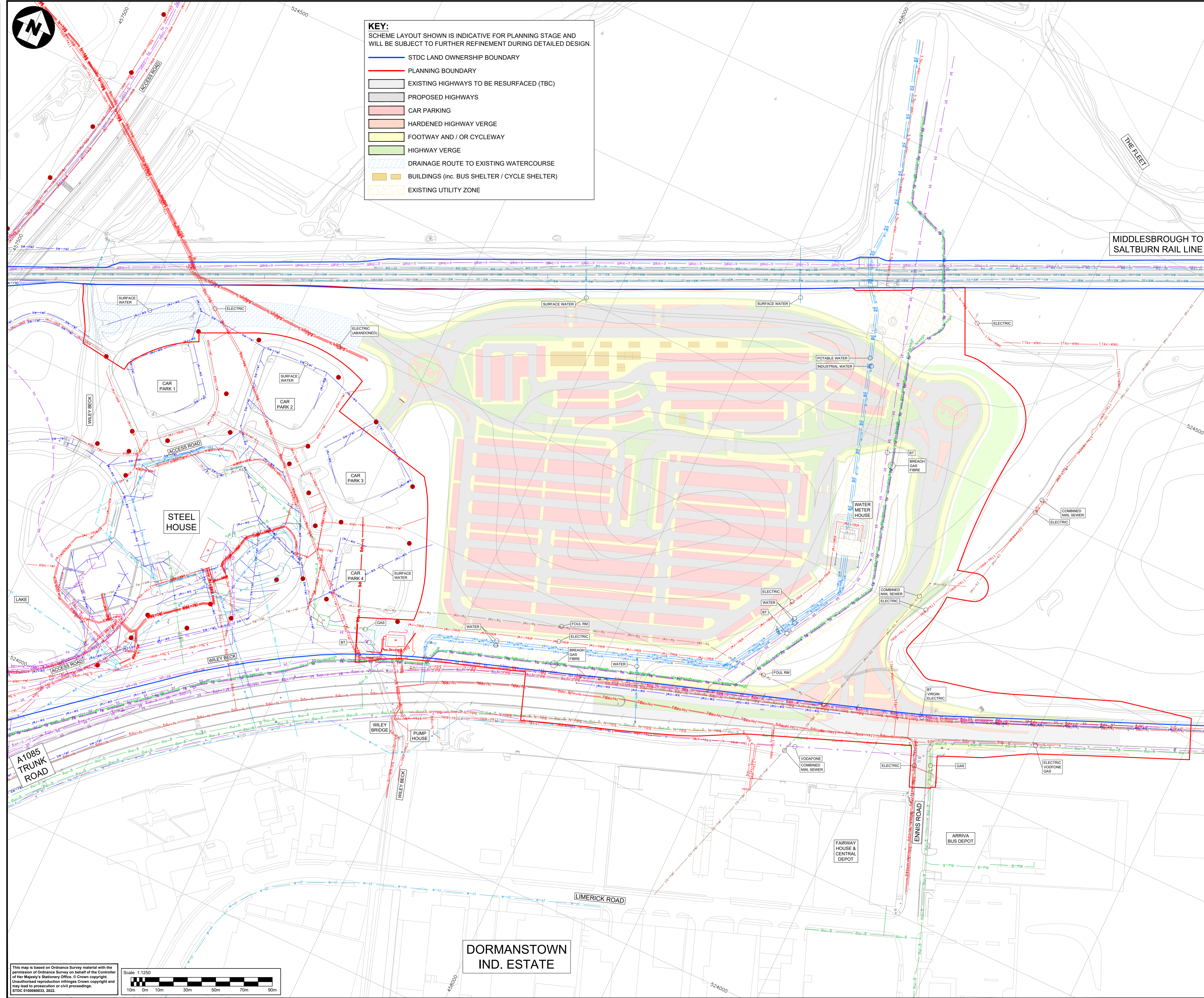


DO NOT SCALE

Millimetres

0 10

100



KEY:
SCHEME LAYOUT SHOWN IS INDICATIVE FOR PLANNING STAGE AND WILL BE SUBJECT TO FURTHER REFINEMENT DURING DETAILED DESIGN.

- STDC LAND OWNERSHIP BOUNDARY
- PLANNING BOUNDARY
- EXISTING HIGHWAYS TO BE RESURFACED (TBC)
- PROPOSED HIGHWAYS
- CAR PARKING
- HARDENED HIGHWAY VERGE
- FOOTWAY AND / OR CYCLEWAY
- HIGHWAY VERGE
- DRAINAGE ROUTE TO EXISTING WATERCOURSE
- BUILDINGS (inc. BUS SHELTER / CYCLE SHELTER)
- EXISTING UTILITY ZONE

NOTES:

- EXISTING UTILITY APPARATUS LOCATIONS PROVIDED BY SOUTH TEES DEVELOPMENT CORPORATION (STDC) FROM C2 REQUESTS UNDERTAKEN IN 2021 AND 2022 AND ARE PROVIDED FOR INFORMATION PURPOSES ONLY.
- NO FURTHER ASSESSMENT HAS BEEN UNDERTAKEN TO VERIFY THEIR ACCURACY OR ON SITE INVESTIGATIONS TO ESTABLISH THE EXACT LOCATIONS.
- SITE INVESTIGATION AND SURVEYS TO BE UNDERTAKEN TO ASCERTAIN EXACT LOCATIONS PRIOR TO DETAILED DESIGN / CONSTRUCTION.

KEY:
ITEMS SHOWN ARE INDICATIVE ONLY AT PLANNING STAGE AND ARE SUBJECT TO FURTHER PRELIMINARY & DETAILED DESIGN.

- elec-rwl ELECTRIC
- 3.3kv-elec ELECTRIC 3.3KV
- 11kv-elec ELECTRIC 11KV
- 66kv-elec ELECTRIC 66KV
- lv-rpg NORTHERN POWER GRID LV (LEFT IN-SITU)
- fw-prv PRIVATE SEWER
- fw-rwl FOUL RISING MAIN
- cs-rwl NORTHUMBRIAN WATER - COMBINED SEWER
- wm-rwl NORTHUMBRIAN WATER - RAW
- w-d NORTHUMBRIAN WATER - CLEAN
- pw POTABLE WATER
- win INDUSTRY WATER
- sw-rwl SURFACE WATER
- sw-nwl NORTHUMBRIAN WATER - SURFACE
- nr-sw NETWORK RAIL DRAINAGE
- fm-rwl NORTHUMBRIAN WATER - FIRE HYDRANTS
- fm-r FIRE HYDRANTS
- g-mp NORTHERN GAS NETWORKS - MEDIUM
- g-lp NORTHERN GAS NETWORKS - LOW
- g-breach BREACH GLYCOL 3INCH
- g-hp-breach BREACH GAS HP
- g-prv GAS PRIVATE
- g-nat GAS NATURAL
- bt BRITISH TELECOMMUNICATIONS
- bt-oh BRITISH TELECOMMUNICATIONS - OVERHEAD
- fo FIBRE CABLES
- v VODAFONE
- c-virg VIRGIN MEDIA
- c-instalcom INSTALCOM
- c-copp COMMUNICATIONS (COPPER) - PHILLIPS
- c-copp COMMUNICATIONS (COPPER) - CORUS

DISCLAIMER: No liability of any kind whatsoever is accepted by Atkins Limited, its servant or agents, for any error or omission in respect of information contained on the plans provided. This plan is a compilation of a number of plans provided at different scales and is intended to provide a graphical representation of services within the area and it is impossible to guarantee accuracy. In addition it is a compilation of information supplied by utility companies who do not guarantee the accuracy of the information. The underground services must be verified and established on site before any excavation is carried out.

Description	Status	Revision	Drawn	Checked	Reviewed	Authorised	Issue Date

ISSUED FOR PLANNING							Status
Status	Revision	Drawn	Checked	Reviewed	Authorised	Issue Date	
A2	CO1	MT	MT	MT	DMA	02/09/22	A2

APPROVED - ORDERS / LICENSES A2

ATKINS
Member of the SNC-Lavalin Group

Dunedin House
Columbia Drive
Stockton-on-Tees
Cleveland
TS17 6BJ
Tel: +44 (0)1642 525200

Copyright © Atkins Limited (2021) www.atkinsglobal.com

TEESWORKS
The UK's largest industrial zone

Project Title: SOUTH TEES DEVELOPMENT CORPORATION

Drawing Title: STEEL HOUSE PARK & RIDE PLANNING APPLICATION EXISTING UTILITIES

Drawing Number: STDC_HWY - ATK - LDC - SHPR - DR - CH - 000020

Project: STDC_HWY - ATK - LDC - SHPR

Original Size: A1 Scale: 1:1250 Project Ref. No.: 5198022 Sheet: 1 of 1 Rev: C01