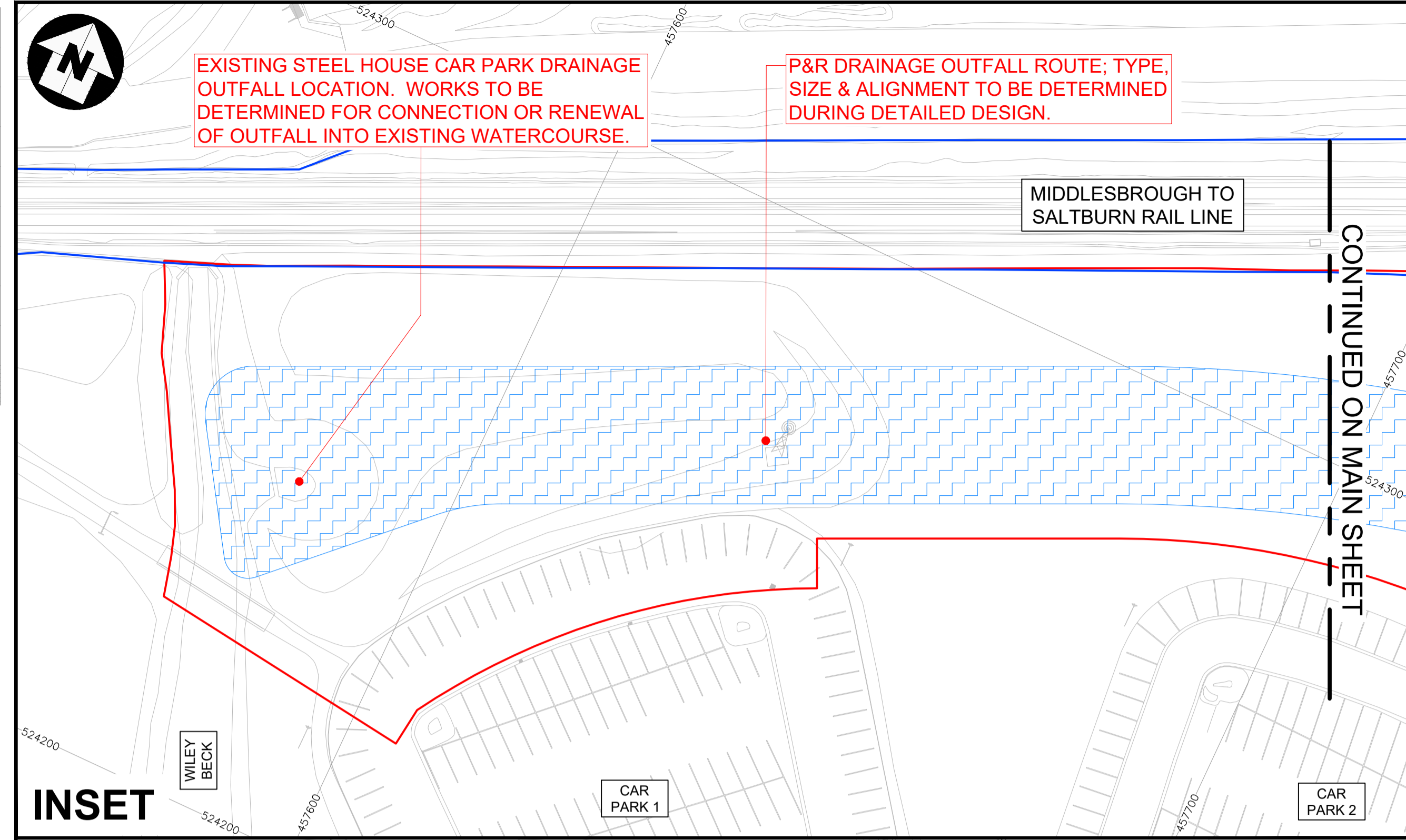


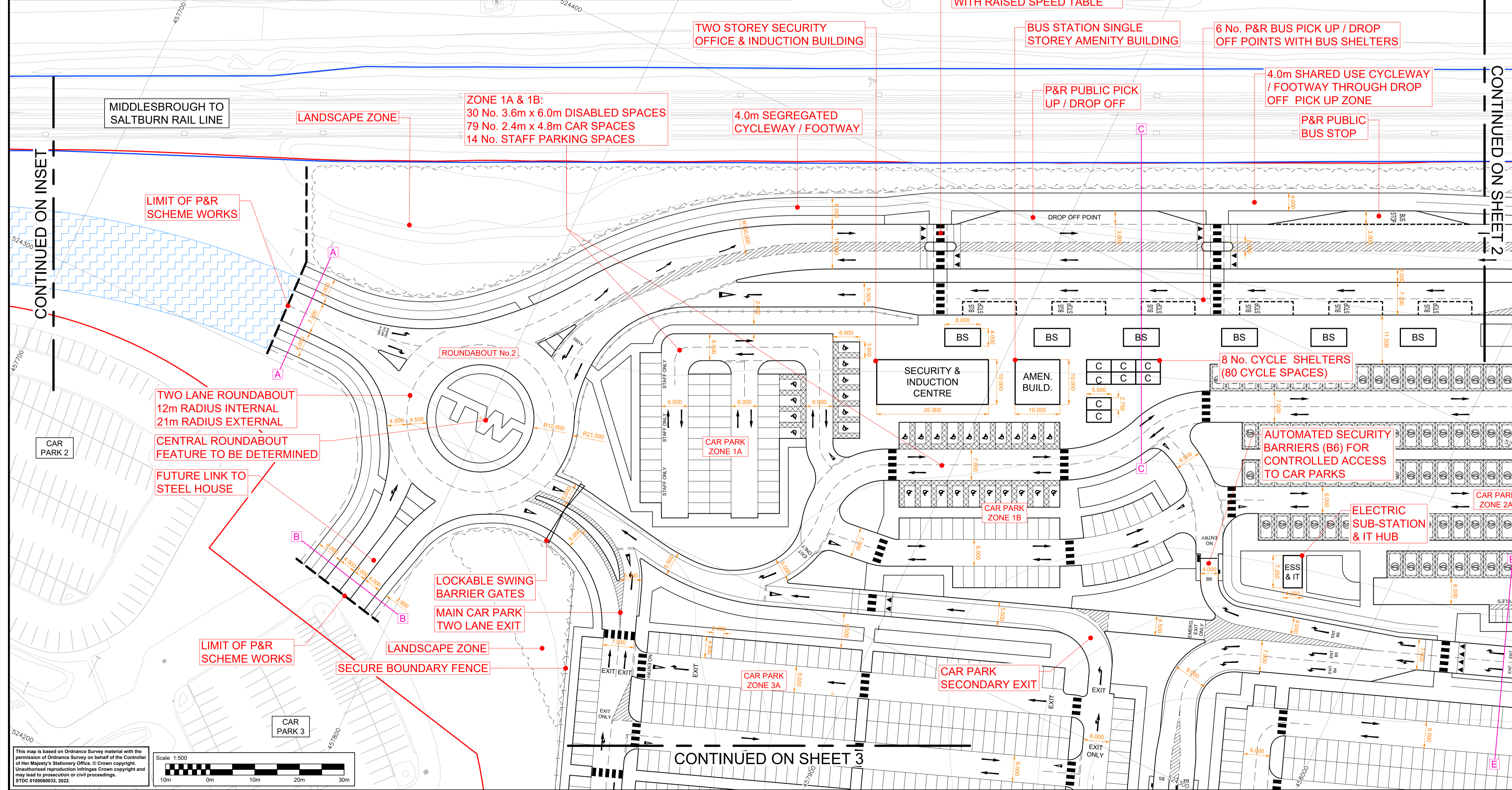
DO NOT SCALE  
0 10 100  
Millimetres



**KEY:**  
ITEMS SHOWN ARE INDICATIVE FOR PLANNING STAGE AND ARE SUBJECT TO FURTHER REFINEMENT DURING DETAILED DESIGN.

- STDC LAND OWNERSHIP BOUNDARY
- PLANNING BOUNDARY
- HIGHWAY LAYOUT
- VEGETATION & LANDSCAPING
- PEDESTRIAN CROSSING POINTS
- ELECTRIC VEHICLE CHARGING PARKING SPACE
- DISABLED PARKING SPACE
- BUILDINGS (inc. BUS SHELTER / CYCLE SHELTER)
- BOUNDARY FENCE - METAL V-MESH
- BOUNDARY FENCE - TIMBER POST & RAIL
- BOUNDARY FENCE - TIMBER BIRDSMOUTH
- GATES & BOLLARDS (TIMBER / METAL TO SUIT)
- TYPICAL SECTION DETAIL LOCATION
- DRAINAGE ROUTE TO EXISTING WATERCOURSE
- EXISTING UTILITY ZONE
- TEESDALE WAY

- NOTES:**
- HIGH LEVEL PLANNING LAYOUT. A FULL GEOMETRIC DESIGN IS TO BE UNDERTAKEN ONCE FINAL PARAMETERS AND CONSTRAINTS ARE CONFIRMED.
  - PROPOSED PARK & RIDE LAYOUT CAR PARK PROVIDES:
    - 1,254 No. 2.4m x 4.8m CAR PARK SPACES
    - 30 No. 1.5 x 3.0m MOTORCYCLE SPACES
    - 45 No. 3.5m x 7.5m MINI BUS / VAN SPACES
    - 30 No. 3.6m x 6.0m DISABLED SPACES
    - 150 No. 3.6m x 6.0m E.V. CHARGING SPACES [1509 P&R SPACES]
    - 80 No. CYCLE SPACES IN 8 No. SHELTERS
    - 14 No. STAFF CAR PARK SPACES
  - FOR TYPICAL HIGHWAY CROSS SECTIONS REFER TO DRAWINGS: STDC\_HWY-ATK-LDC-SHPR-DR-CH-000031 & 032.
  - SECURITY ARRANGEMENTS FOR THE SITE, INCLUDING ENTRY BARRIERS, GATES AND INTERNAL & EXTERNAL BOUNDARY FENCING ARE TO BE DETERMINED DURING DETAILED DESIGN.
  - KERBING - TYPES AND TACTILE PAVING ARRANGEMENTS TO BE DETERMINED IN ACCORDANCE WITH TEES VALLEY DESIGN GUIDE (TVDG) AND RELEVANT STANDARDS.
  - TRAFFIC SIGNS AND ROAD MARKINGS - ROAD MARKINGS ARE SHOWN FOR ILLUSTRATIVE PURPOSES ONLY. AN APPROPRIATE TRAFFIC SIGNING AND ROAD MARKING LAYOUT WILL BE DEVELOPED DURING THE DETAILED DESIGN TO COMPLY WITH CURRENT STANDARDS (TSRGD 2016 & TVDG) AND BEST PRACTICE. THE SIGNING PROVIDED WILL INCLUDE APPROPRIATE DIRECTIONAL INFORMATION, WARNING AND REGULATION SIGNS AS WELL AS ANY REQUIRED NMU SIGNS.
  - STREET LIGHTING - ALL SECTIONS OF NEW OR WIDENED HIGHWAY AND OFF CARRIAGEWAY NMU ROUTES WILL BE LIT IN ACCORDANCE WITH THE RELEVANT STANDARDS FOR THE ROUTE UNDER CONSIDERATION. THE DETAILED DESIGN WILL CONSIDER THE EXTENTS OF STREET LIGHTING REQUIRED TO PROVIDE SAFE HIGHWAY AND NMU ROUTES.
  - DRAINAGE - THE TWO DISCHARGE POINTS IDENTIFIED ARE SUBJECT TO REFINEMENT AT DESIGN STAGE. THE EXISTING DRAINAGE NETWORK SHALL BE ASSESSED TO DETERMINE EXISTING CAPACITY FOR JUNCTION WIDENING WORKS.
  - SEE JBA DRAWINGS FOR DETAILS IN RELATION TO FLOOD RISK ASSESSMENTS AND EXISTING WATERCOURSE DETAILS.
  - PAVEMENT DESIGN - THE ROAD CONSTRUCTION AND FOOTWAY / CYCLEWAY CONSTRUCTION WILL BE CONSTRUCTED FROM FLEXIBLE (BITUMINOUS) SURFACING MATERIALS (WHICH MAY INCLUDE PERMEABLE PAVEMENT OPTIONS FOR CAR PARK BAYS). PAVEMENTS WILL BE DESIGNED TO THE CURRENT TVDG STANDARDS OR UK DMRB PAVEMENT STANDARDS. EXISTING PAVEMENT CONDITION TO BE ASSESSED FOR AREAS OF RESURFACING OR FULL RE-CONSTRUCTION.
  - EARTHWORKS - THE GENERAL ARRANGEMENT DRAWINGS DO NOT SHOW HIGHWAY ALIGNMENT EARTHWORKS. THESE ARE TO BE DETERMINED DURING DETAILED DESIGN AND SUBJECT TO SITE REMEDIATION GROUND LEVELS.
- NOTE: EXISTING VEGETATION REMOVED FROM DRAWING TO AID CLARITY



Description	Status	Revision	Drawn	Checked	Reviewed	Authorised	Issue Date

ISSUED FOR PLANNING							Status
Status	Revision	Drawn	Checked	Reviewed	Authorised	Issue Date	
A2	CO1	MT	MT	MT	DMA	02/09/22	

**APPROVED - ORDERS / LICENSES** A2

**ATKINS**  
Member of the SNC-Lavalin Group

Dunedin House  
Columbia Drive  
Stockton-on-Tees  
Cleveland  
TS17 6BJ  
Tel: +44 (0)1642 525200

Copyright © Atkins Limited (2021) www.atkinsglobal.com

**TEESWORKS**  
The UK's largest industrial zone

Project Title: **SOUTH TEES DEVELOPMENT CORPORATION**

Drawing Title: **STEEL HOUSE PARK & RIDE PLANNING APPLICATION GENERAL ARRANGEMENT (SHEET 1 OF 4)**

Drawing Number	Project	Originator	Volume
STDC_HWY - ATK - LDC - SHPR - DR - CH - 000033			
Location	Scale: 1:500	Project Ref. No. 5198022	Sheet: 1 of 4
Original Size: A1			Rev: C01