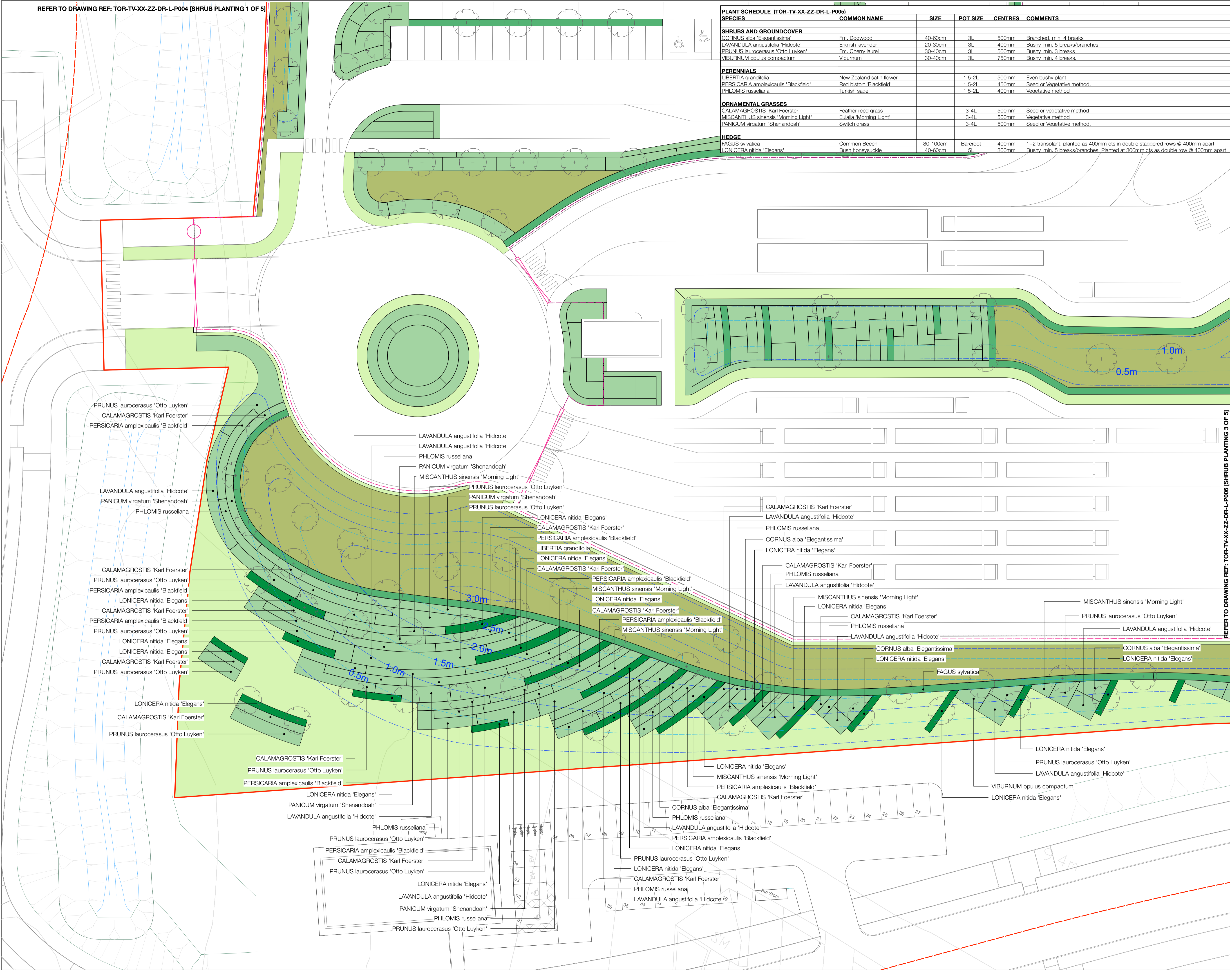


| PLANT SCHEDULE (TOR-TV-XX-ZZ-DR-L-P005) |                          |          |          |         |   |
|---|--------------------------|----------|----------|---------|---|
| SPECIES                                 | COMMON NAME              | SIZE     | POT SIZE | CENTRES | COMMENTS  |
| <b>SHRUBS AND GROUNDCOVER</b>           |                          |          |          |         |   |
| CORNUS alba 'Elegantissima'             | Fm. Dogwood              | 40-60cm  | 3L       | 500mm   | Branched, min. 4 breaks   |
| LAVANDULA angustifolia 'Hidcote'        | English lavender         | 20-30cm  | 3L       | 400mm   | Bushy, min. 5 breaks/branches   |
| PRUNUS laurocerasus 'Otto Luyken'       | Fm. Cherry laurel        | 30-40cm  | 3L       | 500mm   | Bushy, min. 3 breaks  |
| VIBURNUM opulus compactum               | Viburnum                 | 30-40cm  | 3L       | 750mm   | Bushy, min. 4 breaks  |
| <b>PERENNIALS</b>                       |                          |          |          |         |   |
| LIBERTIA grandifolia                    | New Zealand satin flower |          | 1.5-2L   | 500mm   | Even bushy plant  |
| PERSICARIA amplexicaulis 'Blackfield'   | Red bistort 'Blackfield' |          | 1.5-2L   | 450mm   | Seed or vegetative method.  |
| PHLOMIS russeliana                      | Turkish sage             |          | 1.5-2L   | 400mm   | Vegetative method   |
| <b>ORNAMENTAL GRASSES</b>               |                          |          |          |         |   |
| CALAMAGROSTIS 'Karl Foerster'           | Feather reed grass       |          | 3-4L     | 500mm   | Seed or vegetative method   |
| MISCANTHUS sinensis 'Morning Light'     | Eulalia 'Morning Light'  |          | 3-4L     | 500mm   | Vegetative method   |
| PANICUM virgatum 'Shenandoah'           | Switch grass             |          | 3-4L     | 500mm   | Seed or vegetative method.  |
| <b>HEDGE</b>                            |                          |          |          |         |   |
| FAGUS sylvatica                         | Common Beech             | 80-100cm | Bareroot | 400mm   | 1+2 transplant, planted as 400mm cts in double staggered rows @ 400mm apart     |
| LONICERA nitida 'Elegans'               | Bush honeysuckle         | 40-60cm  | 5L       | 300mm   | Bushy, min. 5 breaks/branches. Planted at 300mm cts as double row @ 400mm apart |

- Key
- Outline Application Boundary
  - Reserved Matters Application Boundary
  - Proposed ornamental hedge
  - Proposed ornamental Beech hedge
  - Proposed native woodland mix (Refer to dwg no. P003)
  - Proposed ornamental planting
  - Proposed amenity grass mix (Refer to dwg no. P003)
  - Proposed wildflower rich grass mix (Refer to dwg no. P003)
  - Proposed wet meadow grass mix (Refer to dwg no. P003)
  - Proposed grasscrete blocks filled with amenity grass mix (Refer to dwg no. P003)
  - Proposed accent shrubs
  - Proposed contours
  - Proposed contours to accommodate above ground attenuation
  - Proposed location of 2.4m security fence
  - Proposed location of 2.4m security fence
  - Proposed personnel gate
  - Proposed swing gate for vehicle access



REFER TO DRAWING REF: TOR-TV-XX-ZZ-DR-L-P008 [SHRUB PLANTING 3 OF 5]

| Notes/Revisions | Date       | Description  | Author |
|-----------------|------------|--|--------|
| C               | 31/03/2022 | Revised location of some car park trees to accord with lighting columns. | DL     |
| D               | 04/04/2022 | Additional text to titleblock  | DL     |
| E               | 17/02/2023 | Revised architect's layout.  | MFP    |
| F               | 21/03/2023 | Revisions to green tones   | NME    |

Tees Valley  
Viridor

Shrub planting 2 of 5 - Planning

|                 |                        |           |                 |             |         |
|-----------------|------------------------|-----------|-----------------|-------------|---------|
| Status:         | For Planning           | Drawn by: | NME             | Checked by: | RB      |
| Project Number: | 227707                 | Scale:    | Scale@A1: 1:250 | Date:       | 02/2023 |
| Drawing Number: | TOR-TV-XX-ZZ-DR-L-P005 | Revision: | F               |             |         |

This map base was provided to Viridor Tees Valley Limited by the Tees Valley Energy Recovery Facility Contract Authority (comprising Darlington, Hartlepool, Middlesbrough, Redcar & Cleveland, and Stockton-on-Tees Local Authorities and Durham County Council and Newcastle City Council) in 2020.

© Terence O'Rourke Ltd 2021 Do not scale from this drawing

**TERENCE O'ROURKE**  
 LONDON  
 7 Haddon Street  
 London W1B 4BD  
 BIRMINGHAM  
 Enterprise House 115 Edmund Street  
 Birmingham B3 2JU  
 BOURNEMOUTH  
 Everdane House Downsleigh Road  
 Bournemouth BH7 7DU  
 TELEPHONE  
 020 3664 6755  
 www.torfd.co.uk