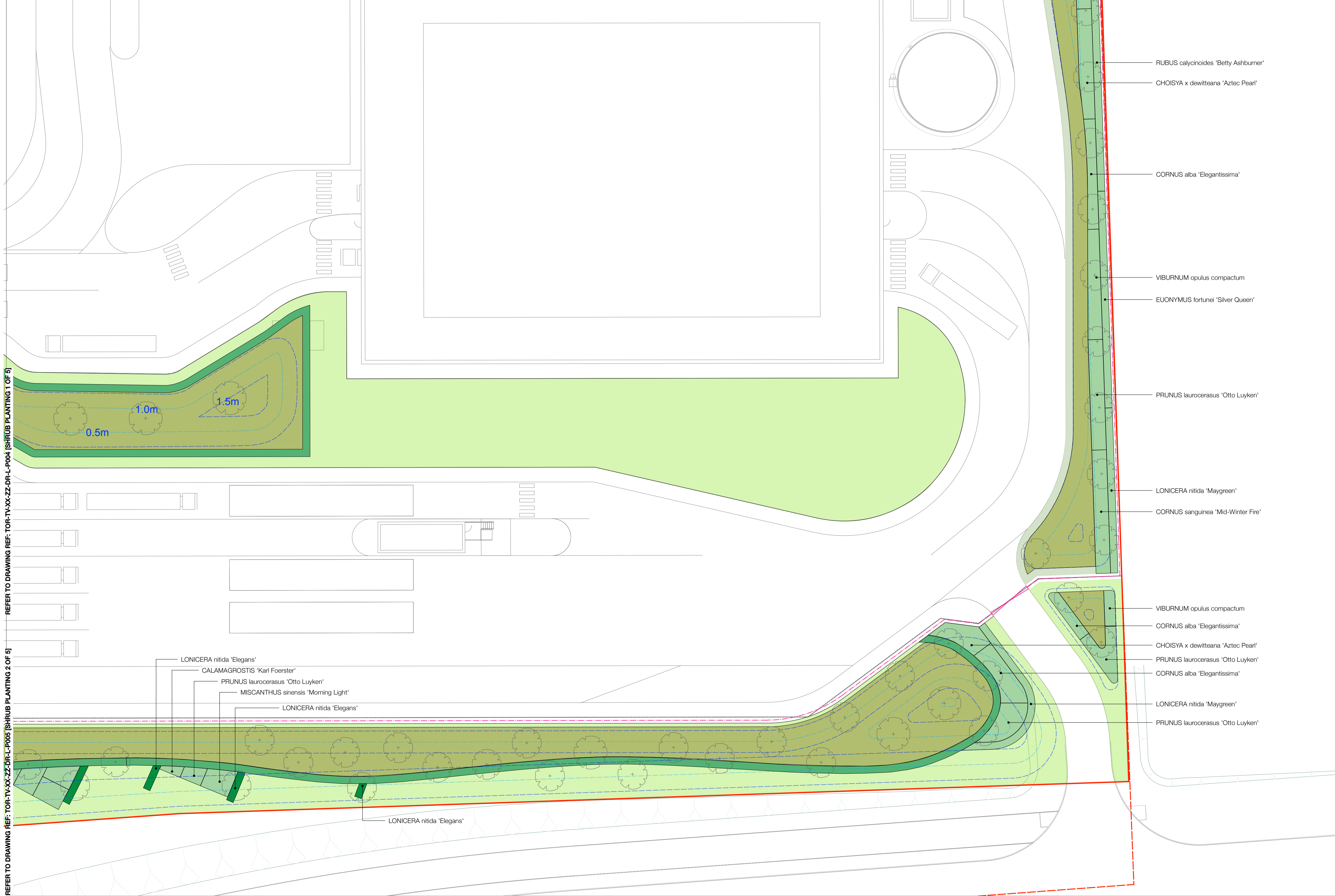


PLANT SCHEDULE (TOR-TV-XX-ZZ-DR-L-P006)					
SPECIES	COMMON NAME	SIZE	POT SIZE	CENTRES	COMMENTS
<b>SHRUBS AND GROUNDCOVER</b>					
CHOISYA x dewitteana 'Aztec Pearl'	Mexican orange 'Aztec Pearl'	30-40cm	3L	600mm	Bushy, min. 5 breaks/branches
CORNUS alba 'Elegantissima'	Fm. Dogwood	40-60cm	3L	500mm	Branched, min. 4 breaks
CORNUS sanguinea 'Mid-Winter Fire'	Fm. Dogwood	40-60cm	3L	600mm	Branched, min. 3 breaks
EUONYMUS fortunei 'Silver Queen'	Fm. Euonymus	30-40(D)cm	3L	400mm	Bushy, min. 7 breaks/branches
LONICERA nitida 'Maygreen'	Fm. Shrubby honeysuckle	30-40(D)cm	3L	450mm	Bushy, min. 6 breaks
PRUNUS laurocerasus 'Otto Luyken'	Fm. Cherry laurel	30-40cm	3L	500mm	Bushy, min. 3 breaks
RUBUS calycioides 'Betty Ashburner'	Fm. Chinese bramble	30-40(D)	3L	500mm	Branched, min. 5 breaks
VIBURNUM opulus compactum	Viburnum	30-40cm	3L	750mm	Bushy, min. 4 breaks
<b>ORNAMENTAL GRASSES</b>					
CALAMAGROSTIS 'Karl Foerster'	Feather reed grass		3-4L	500mm	Seed or vegetative method
MISCANTHUS sinensis 'Morning Light'	Eulalia 'Morning Light'		3-4L	500mm	Vegetative method
<b>HEDGE</b>					
FAGUS sylvatica	Common Beech	80-100cm	Bareroot	400mm	1+2 transplants, planted as 400mm cts in double staggered rows @ 400mm apart
LONICERA nitida 'Elegans'	Bush honeysuckle	40-60cm	5L	300mm	Bushy, min. 5 breaks/branches, Planted at 300mm cts as double row @ 400mm apart



REFER TO DRAWING REF: TOR-TV-XX-ZZ-DR-L-P007 [SHRUB PLANTING 4 OF 5]

- Key**
- Outline Application Boundary
  - Reserved Matters Application Boundary
  - Proposed ornamental hedge
  - Proposed ornamental Beech hedge
  - Proposed native woodland mix (Refer to dwg no. P003)
  - Proposed ornamental planting
  - Proposed amenity grass mix (Refer to dwg no. P003)
  - Proposed wildflower rich grass mix (Refer to dwg no. P003)
  - Proposed wet meadow grass mix (Refer to dwg no. P003)
  - Proposed grasscrete blocks filled with amenity grass mix (Refer to dwg no. P003)
  - Proposed accent shrubs
  - Proposed contours
  - Proposed contours to accommodate above ground attenuation
  - Proposed location of 2.4m security fence
  - Proposed location of 2.4m security fence
  - Proposed personnel gate
  - Proposed swing gate for vehicle access

**Notes/Revisions**

Rev	Date	Description	By
C	04/04/2022	Additional text to titleblock	DL
D	17/02/2023	Revised architect's layout.	MFP
E	21/03/2023	Revisions to green tones	NME

**Tees Valley**  
Viridor

**Shrub planting 3 of 5 - Planning**

Status:	For Planning	Drawn by:	NME	Checked by:	RB
Project Number:	227707	Scale:	Scale@A1: 1:250	Date:	02/2023
Drawing Number:	TOR-TV-XX-ZZ-DR-L-P006	Revision:	E		

This map base was provided to Viridor Tees Valley Limited by the Tees Valley Energy Recovery Facility Contract Authority (comprising Darlington, Hartlepool, Middlesbrough, Redcar & Cleveland, and Stockton Tynes Authorities and Durham County Council and Newcastle City Council) in 2020.

© Terence O'Rourke Ltd 2021 Do not scale from this drawing

**TERENCE O'ROURKE**

LONDON  
7 Haddon Street  
London W1B 4BD

BIRMINGHAM  
Enterprise House 115 Edmund Street  
Birmingham B3 2JU

BOURNEMOUTH  
Everdine House Osmonds Road  
Bournemouth BH7 7DU

TELEPHONE  
020 3664 6755  
www.torltd.co.uk

REFER TO DRAWING REF: TOR-TV-XX-ZZ-DR-L-P004 [SHRUB PLANTING 1 OF 5]

REFER TO DRAWING REF: TOR-TV-XX-ZZ-DR-L-P008 [SHRUB PLANTING 2 OF 5]