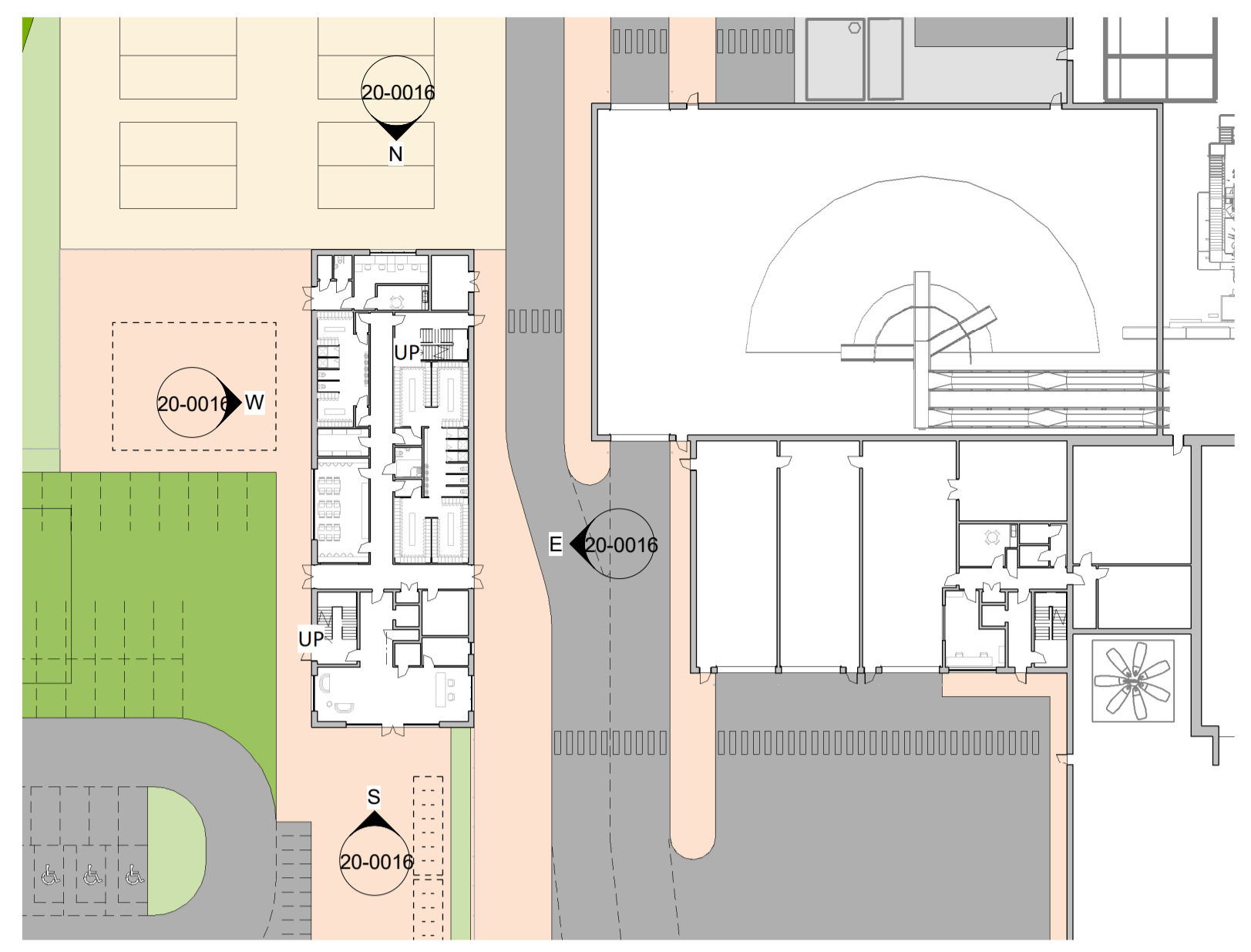


**Office/Admin\_NORTH Elevation**  
1:200



**Admin/Office Elevation Key Plan**  
1:500

**General Notes**

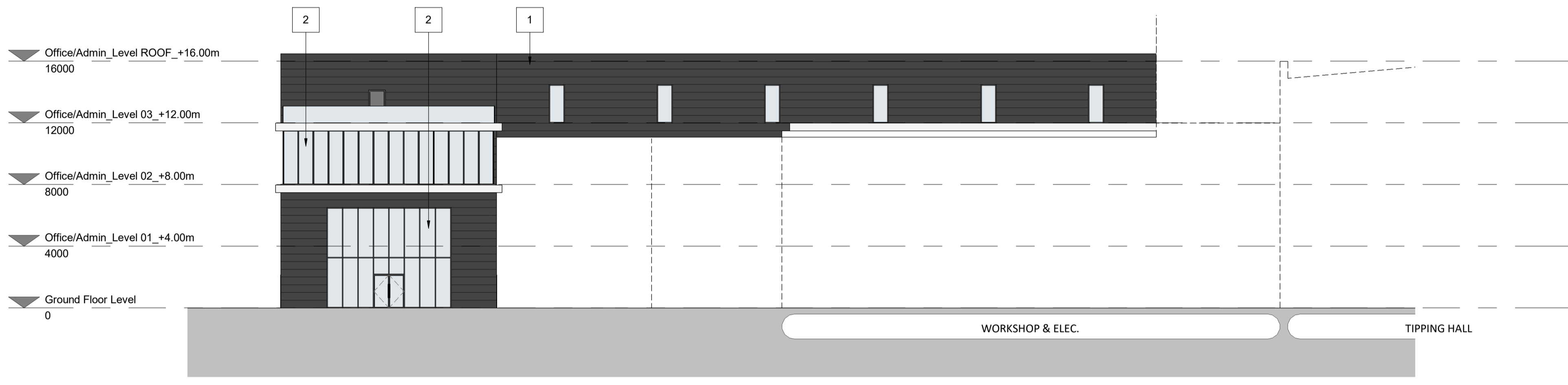
Do not scale from this drawing. Only work to written dimensions.

All site dimensions shall be verified by the Contractor on site prior to commencing any works.

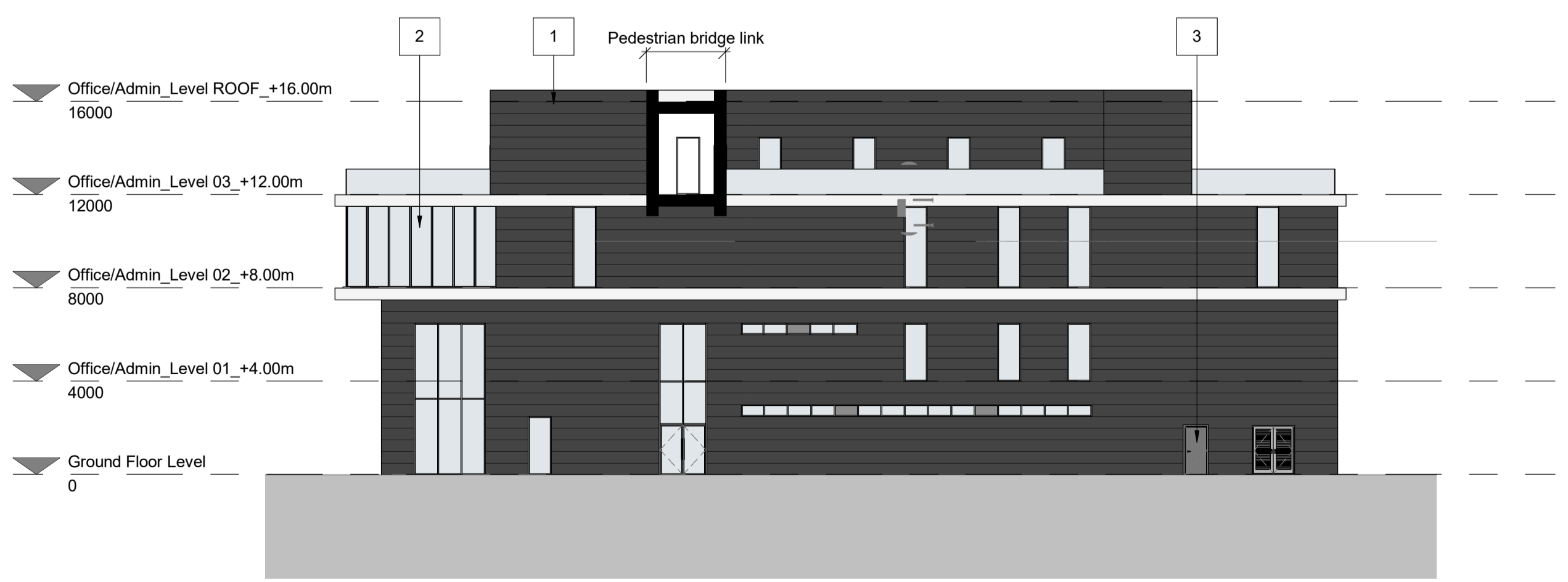
This drawing is the property of Fletcher-Rae (UK) Limited (t/a Fletcher-Rae) and copyright is reserved by them. The drawing is not to be copied or disclosed by or to any unauthorised persons without the prior written consent of Fletcher-Rae (UK) Limited.

Map bases were provided to Viridor Tees Valley Limited by the Tees Valley Energy Recovery Facility Contract Authority (comprising Darlington, Hartlepool, Middlesbrough, Redcar & Cleveland, and Stockton Unitary Authorities and Durham County Council and Newcastle City Council) in 2020.

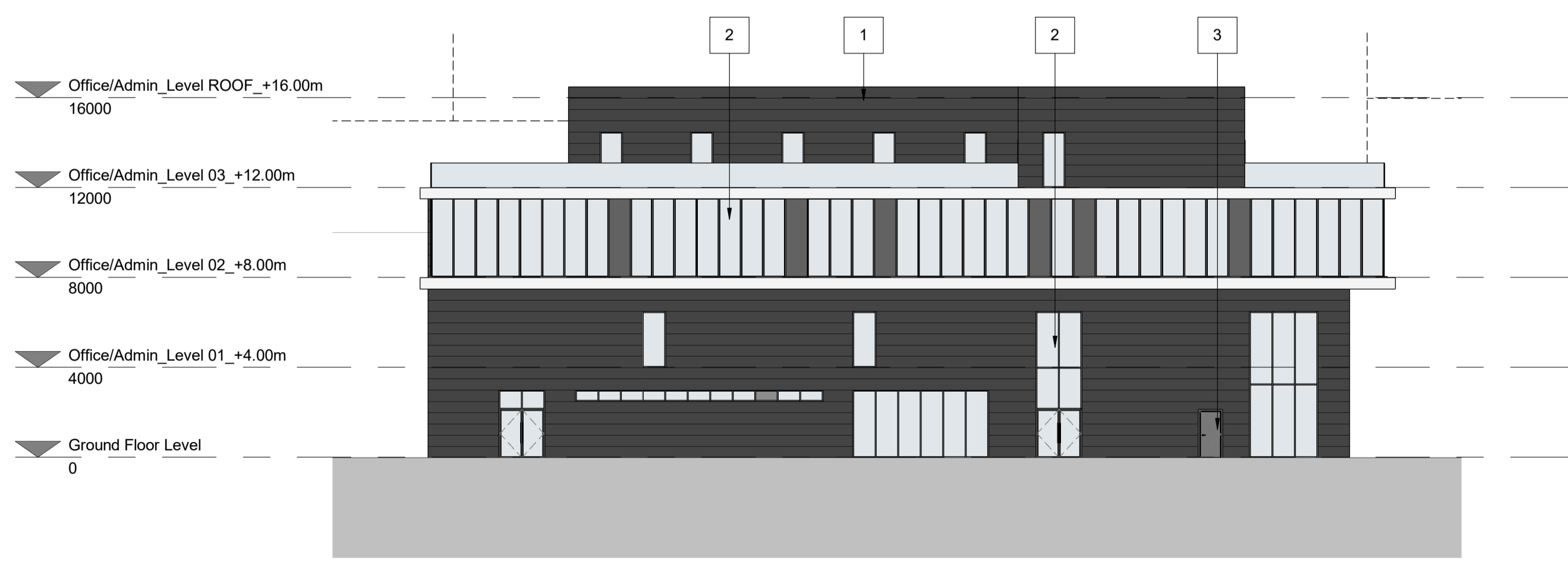
- Materials Key**
1. Deep profiled external sheet metal cladding laid with profile running horizontally. Colour: Black
  2. Curtain wall glazing system, with integrated glazed doors.
  3. Steel framed doors with steel clad finish to both sides to match adjacent composite cladding.



**Office/Admin\_SOUTH Elevation**  
1:200



**Office/Admin\_EAST Elevation**  
1:200



**Office/Admin\_WEST Elevation**  
1:200

Rev.	Description	Date	ISS	APP
P8	Amendments to suit client comments	24.02.2023	JDC	RT
P7	General Amendments	21.02.2023	JDC	RT
P6	Amendments to suit client comments	07.02.2023	JDC	RT
P5	Planning / Bid issue	31.01.2023	JDC	RT
P4	General note added for copyright purposes	04.04.2022	JDC	RT
P3	Drawing updated to client comments	28.03.2022	JDC	RT
P2	Planning pack issue	09.02.2022	JDC	RT
P1	Planning pack updated to reflect Acciona comments	09.12.2021	JDC	RT
P0	Planning pack first issue	16.10.2021	JDC	RT

Scale: As indicated @ A1  
 Status: S2 Information  
 Drawn By: JDC  
 Checked By: RT  
 Date: 04.04.2022

Client: **VIRIDOR**  
 Project: **TEES VALLEY ERF**

Sheet Name: **Office/Admin GA Elevations**

Project No.	Orig.	Zone	Level	Type	Role	Cls	Dwg No.	Rev
20044-FRA-00-00-DR-A							-20-0016	P8

**fletcher|rae**  
 Architects | Master Planners | Designers  
 Hill Quays, 5 Jordan Street, Manchester, M15 4PY

t +44 (0) 161 242 1140  
 f +44 (0) 161 242 1141  
 w www.fletcher-rae.com  
 e info@fletcher-rae.com

