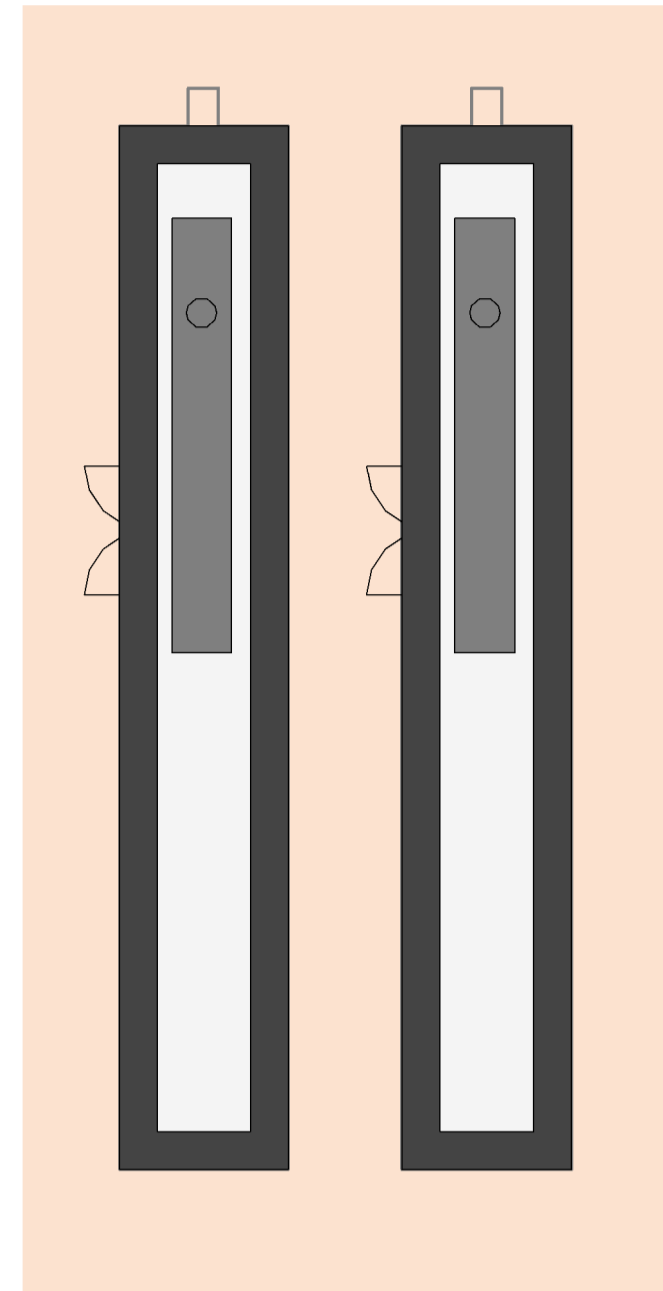
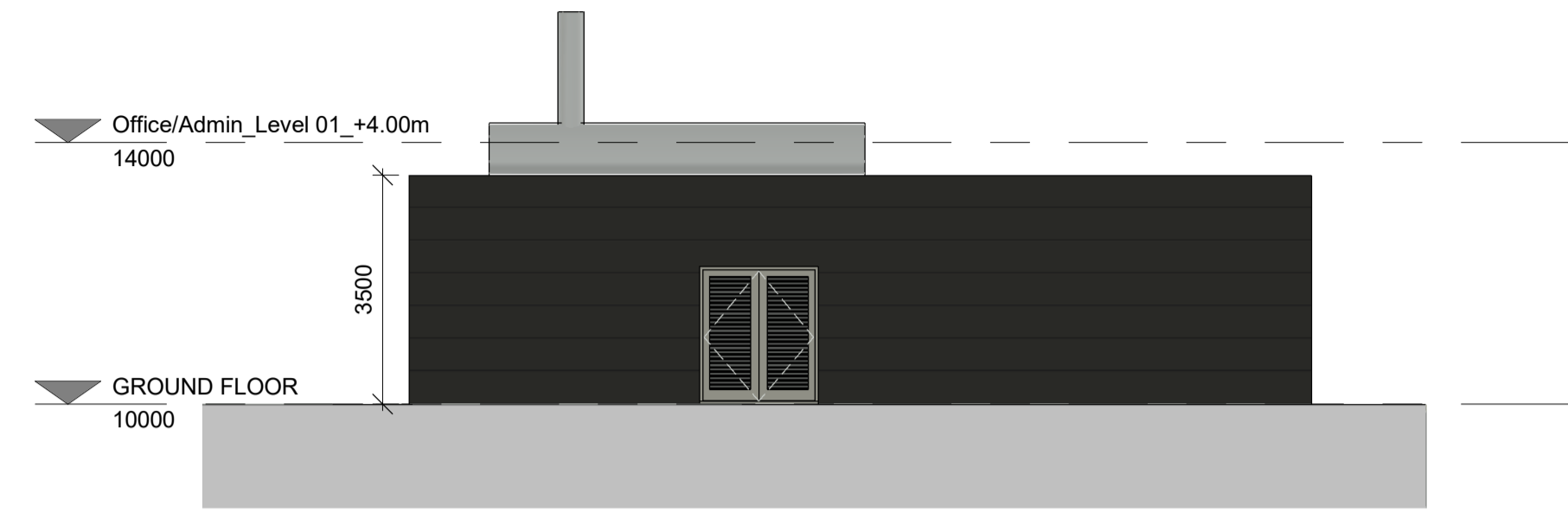


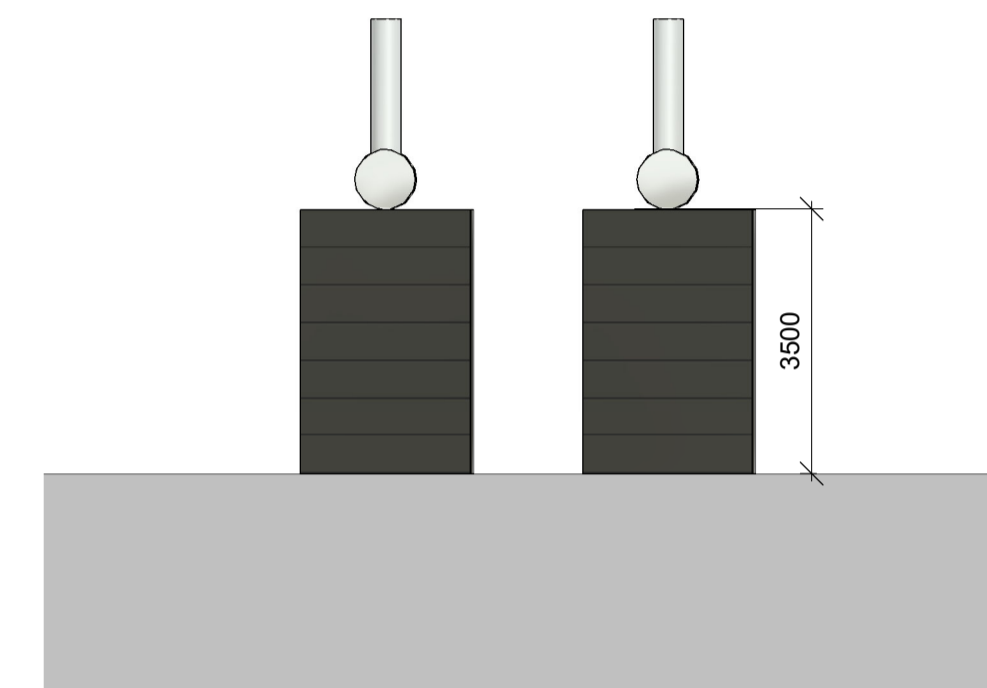
GA Plan - EDG
1:100



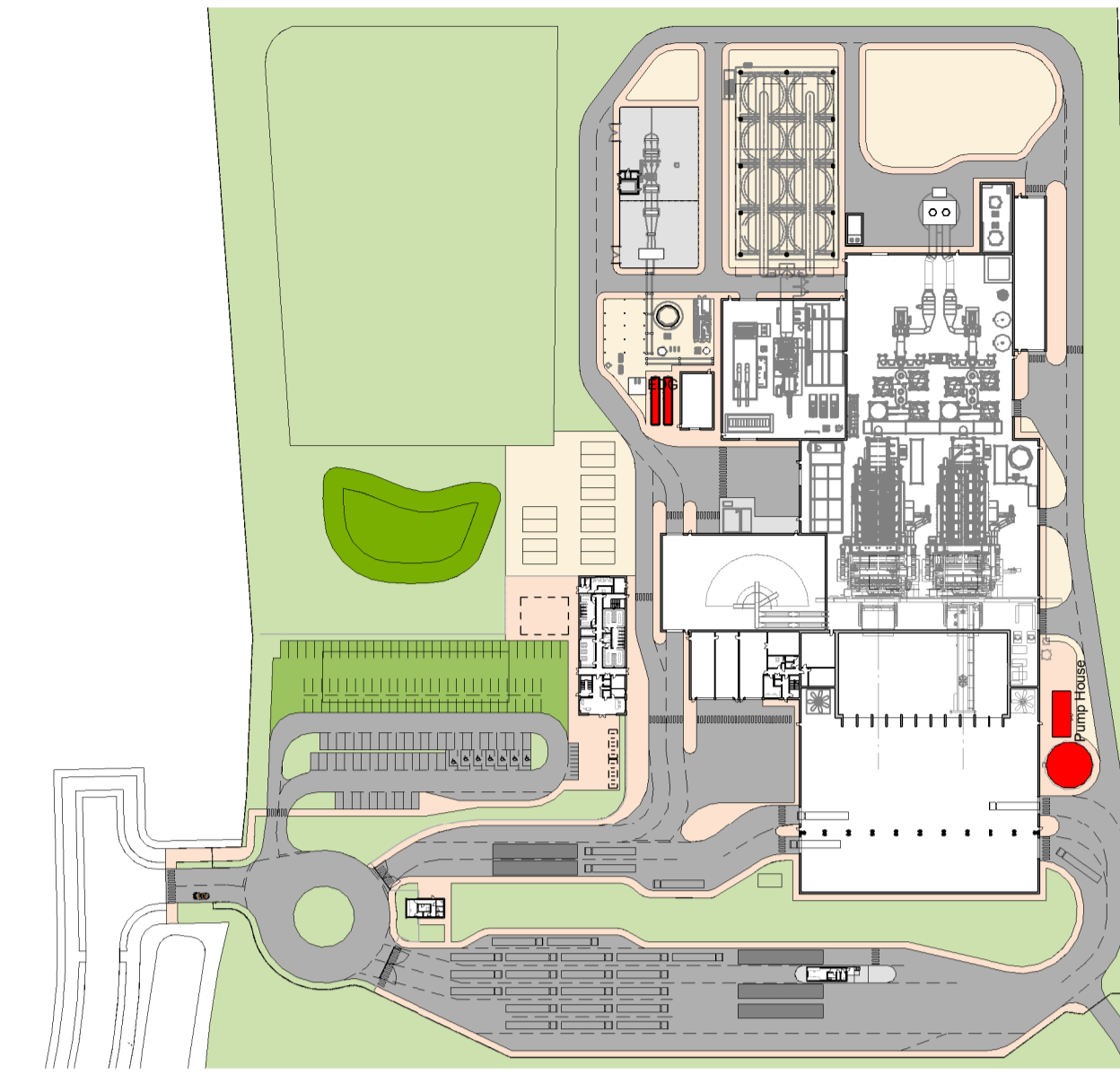
EDG Roof Plan
1:100



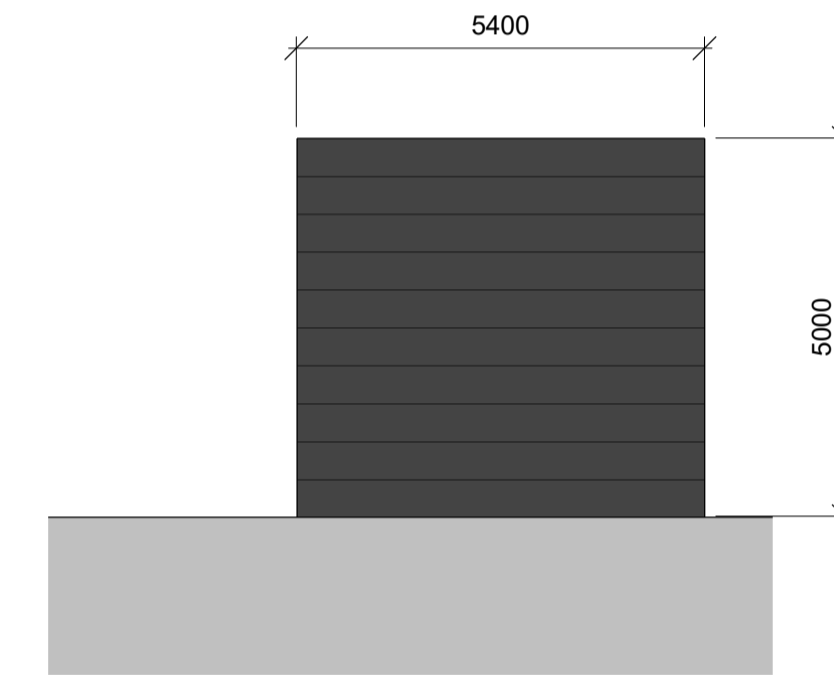
EDG West Elevation
1:100



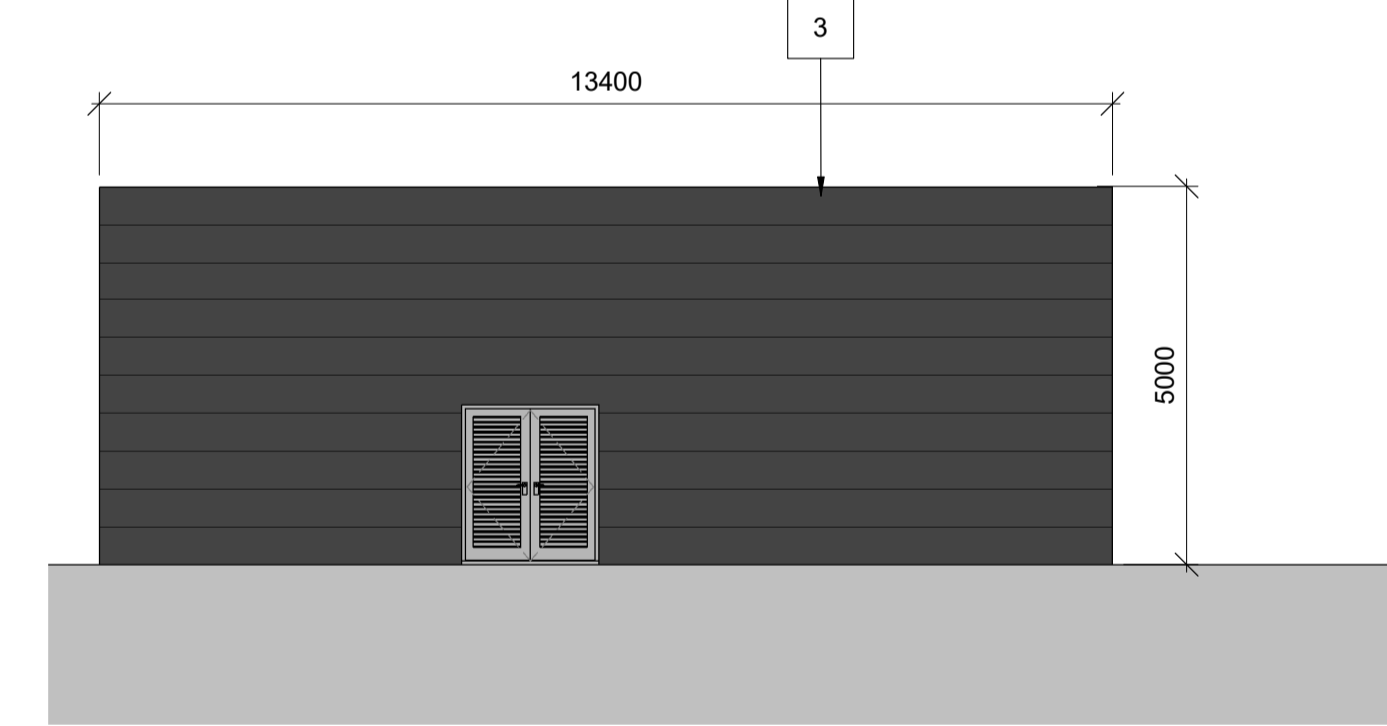
EDG South Elevation
1:100



EDG/Water Tank Key Plan



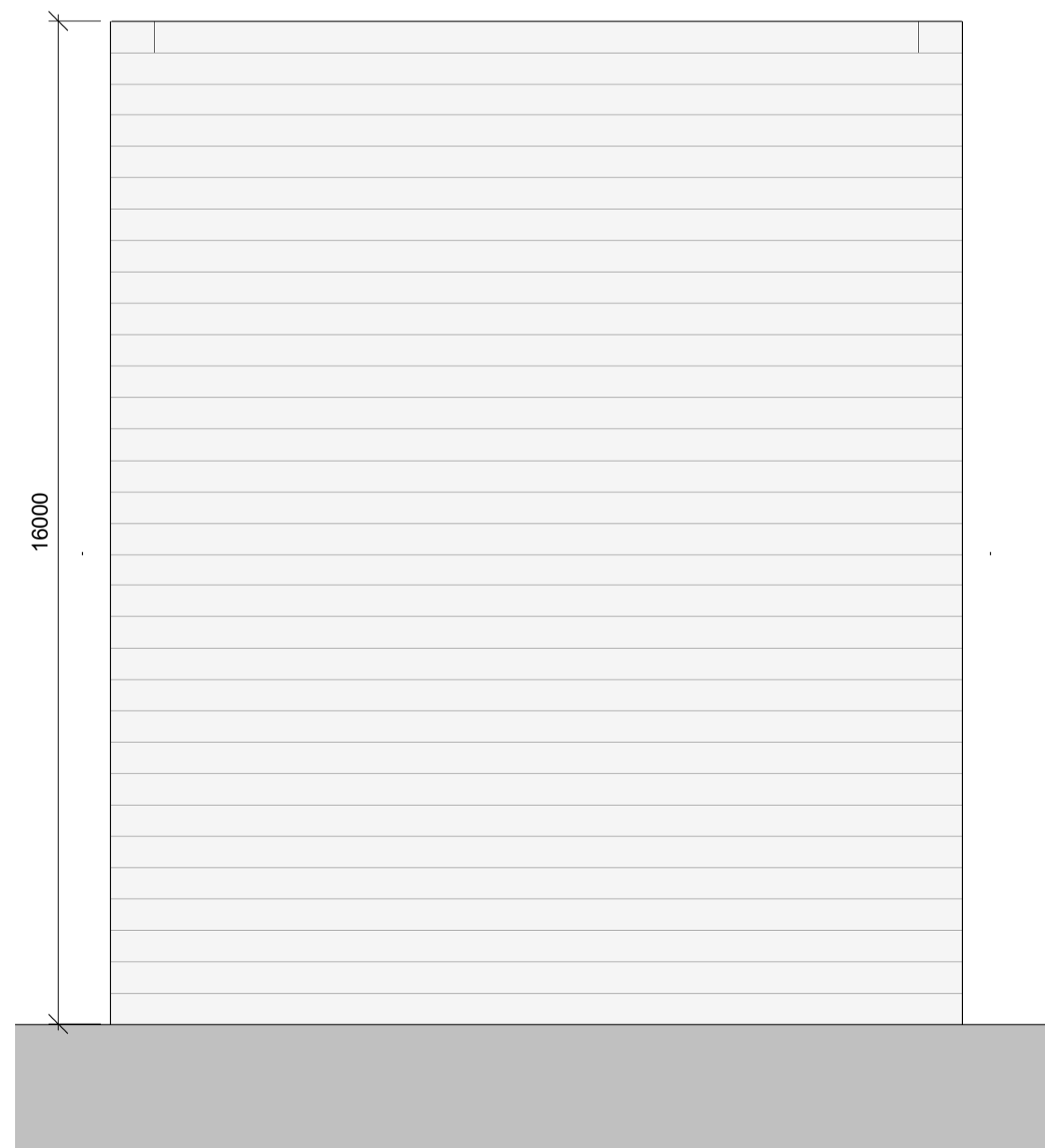
Pump House NORTH & SOUTH Elevation



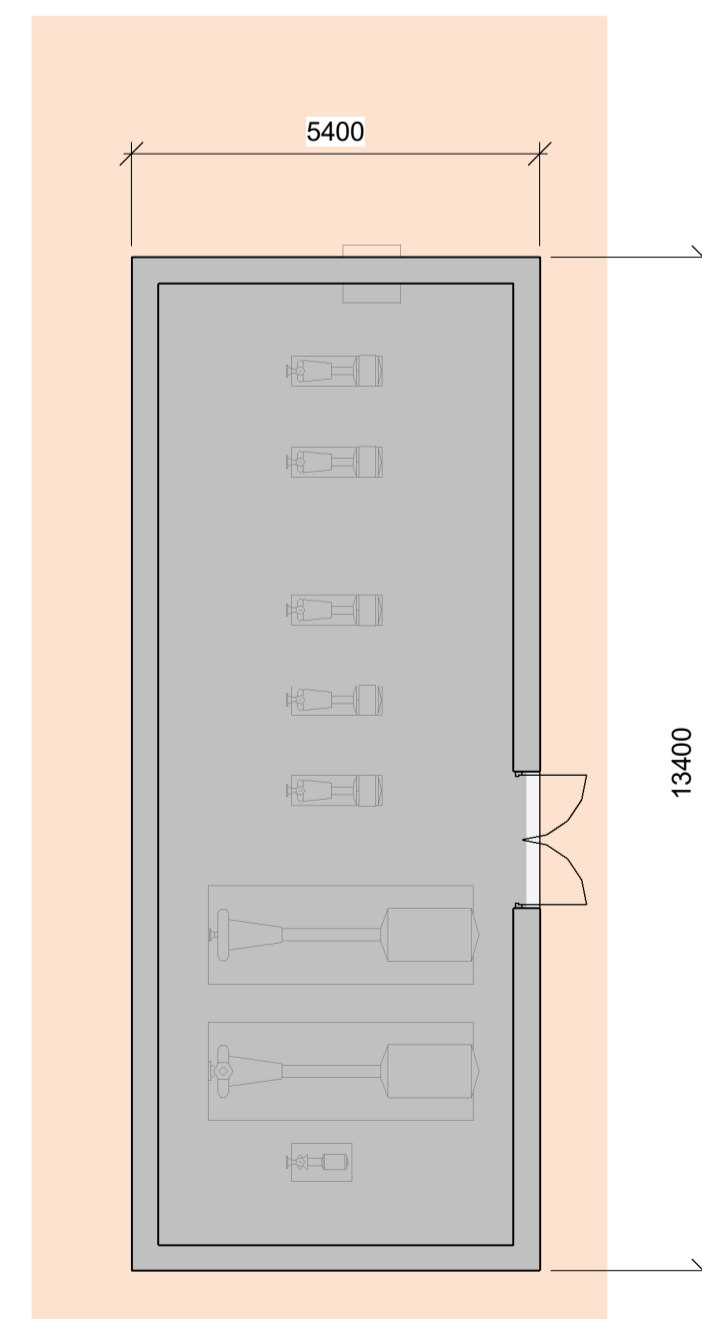
Pump House EAST Elevation



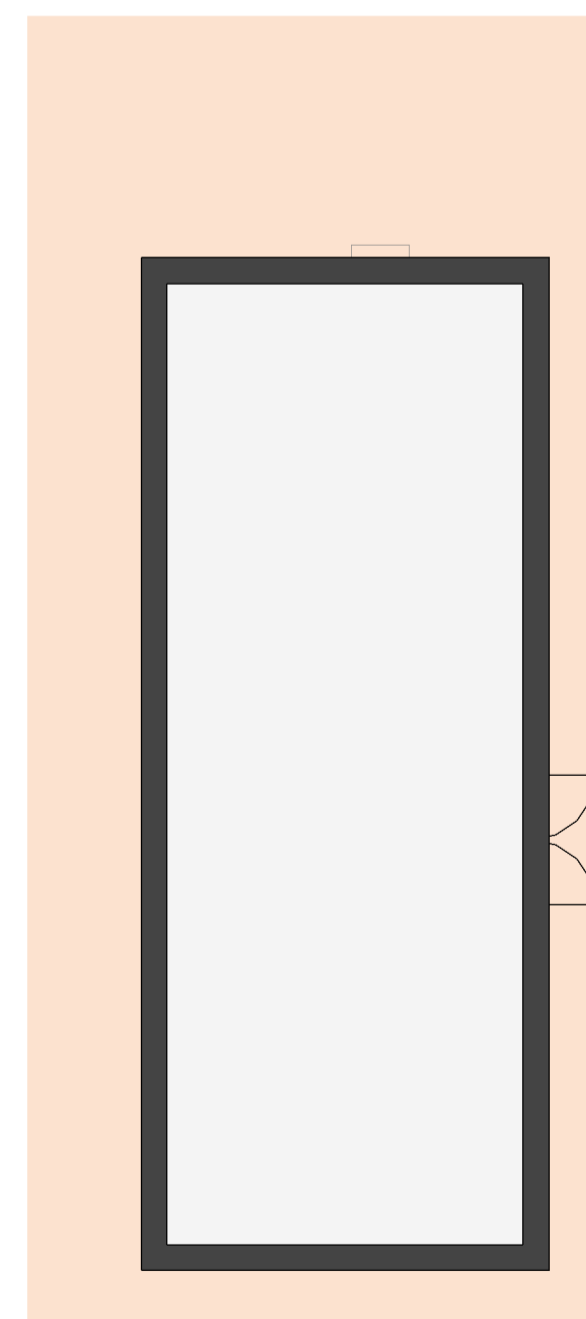
Pump House WEST Elevation



Water Tank Elevation



GA Plan - Pump House



Pump House Roof Plan

General Notes

Do not scale from this drawing. Only work to written dimensions.

All site dimensions shall be verified by the Contractor on site prior to commencing any works.

This drawing is the property of Fletcher-Rae (UK) Limited (t/a Fletcher-Rae) and copyright is reserved by them. The drawing is not to be copied or disclosed by or to any unauthorised persons without the prior written consent of Fletcher-Rae (UK) Limited.

Map bases were provided to Viridor Tees Valley Limited by the Tees Valley Energy Recovery Facility Contract Authority (comprising Darlington, Hartlepool, Middlesbrough, Redcar & Cleveland, and Stockton Unitary Authorities and Durham County Council and Newcastle City Council) in 2020.

Materials Key

1. Translucent polycarbonate cladding system
2. Deep profiled external sheet aluminium cladding laid with profile running horizontally. Colour: Grey (RAL TBC)
3. Deep profiled external sheet aluminium cladding laid with profile running horizontally. Colour: Black
4. Curtain wall glazing system, with integrated glazed doors.
5. Polyester powder coated panelled up and over electrically operated insulated loading door.
6. Steel framed doors with steel clad finish to both sides to match adjacent composite cladding.
7. Profiled roof deck with single layer PVC weathering membrane
8. Standing Seam System (aluminium) aid with profile running vertically. Colour: Light Grey

Ground FFL: 10m AOD

Rev.	Description	Date	ISS	APP
P10	General Amendments	21.02.2023	JDC	RT
P9	Amendments to suit client comments	07.02.2023	JDC	RT
P8	Planning / Bid Issue	31.01.2023	JDC	RT
P7	General Updates	10.01.2023	JDC	RT
P6	General note added for copyright purposes	04.04.2022	JDC	RT
P5	Drawing updated to client comments	28.03.2022	JDC	RT
P4	Planning pack update	10.02.2022	JDC	RT
P3	Planning pack issue	09.02.2022	JDC	RT
P2	Additional WC added to Gatehouse	27.01.2022	JDC	RT
P1	Planning pack updated to reflect Acciona comments	09.12.2021	JDC	RT
P0	Planning pack first issue	16.10.2021	JDC	RT

Scale: As indicated @ A1
 Status: S2 Information
 Drawn By: JDC
 Checked By: RT
 Date: 04.04.2022

Client: VIRIDOR

Project: TEES VALLEY ERF

Sheet Name: EDG, Water Tank & Pump House

Project No. 20044-FRA-00-00-DR-A-20-0021 Rev P10

fletcher|rae
 Architects | Master Planners | Designers

Hill Quays, 5 Jordan Street, Manchester, M15 4PY

t +44 (0) 161 242 1140
 f +44 (0) 161 242 1141
 w www.fletcher-rae.com
 e info@fletcher-rae.com

