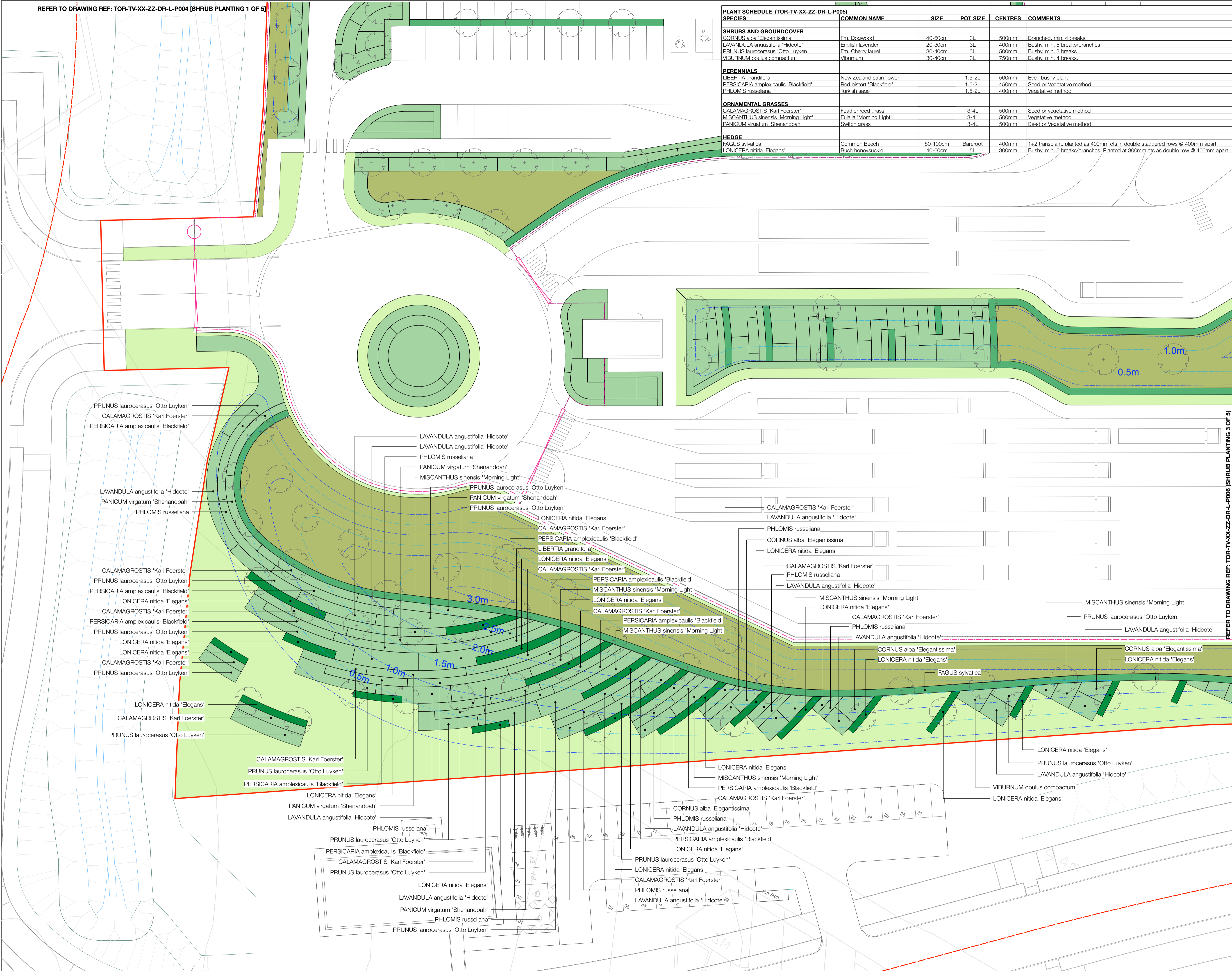


PLANT SCHEDULE (TOR-TV-XX-ZZ-DR-L-P005)					
SPECIES	COMMON NAME	SIZE	POT SIZE	CENTRES	COMMENTS
<b>SHRUBS AND GROUNDCOVER</b>					
CORNUS alba 'Elegantissima'	Fm. Dogwood	40-60cm	3L	500mm	Branched, min. 4 breaks
LAVANDULA angustifolia 'Hidcote'	English lavender	20-30cm	3L	400mm	Bushy, min. 5 breaks/branches
PRUNUS laurocerasus 'Otto Luyken'	Fm. Cherry laurel	30-40cm	3L	500mm	Bushy, min. 3 breaks
VIBURNUM opulus compactum	Viburnum	30-40cm	3L	750mm	Bushy, min. 4 breaks
<b>PERENNIALS</b>					
LIBERTIA grandifolia	New Zealand satin flower		1.5-2L	500mm	Even bushy plant
PERSICARIA amplexicaulis 'Blackfield'	Red bistort 'Blackfield'		1.5-2L	450mm	Seed or vegetative method.
PHLOMIS russeliana	Turkish sage		1.5-2L	400mm	Vegetative method
<b>ORNAMENTAL GRASSES</b>					
CALAMAGROSTIS 'Karl Foerster'	Feather reed grass		3-4L	500mm	Seed or vegetative method
MISCANTHUS sinensis 'Morning Light'	Eulalia 'Morning Light'		3-4L	500mm	Vegetative method
PANICUM virgatum 'Shenandoah'	Switch grass		3-4L	500mm	Seed or vegetative method.
<b>HEDGE</b>					
FAGUS sylvatica	Common Beech	80-100cm	Bareroot	400mm	1+2 transplant, planted as 400mm cts in double staggered rows @ 400mm apart
LONICERA nitida 'Elegans'	Bush honeysuckle	40-60cm	5L	300mm	Bushy, min. 5 breaks/branches. Planted at 300mm cts as double row @ 400mm apart

- Key
- Outline Application Boundary
  - Reserved Matters Application Boundary
  - Proposed ornamental hedge
  - Proposed ornamental Beech hedge
  - Proposed native woodland mix (Refer to dwg no. P003)
  - Proposed ornamental planting
  - Proposed amenity grass mix (Refer to dwg no. P003)
  - Proposed wildflower rich grass mix (Refer to dwg no. P003)
  - Proposed wet meadow grass mix (Refer to dwg no. P003)
  - Proposed grasscrete blocks filled with amenity grass mix (Refer to dwg no. P003)
  - Proposed accent shrubs
  - Proposed contours
  - Proposed contours to accommodate above ground attenuation
  - Proposed location of 2.4m security fence
  - Proposed location of 2.4m security fence
  - Proposed personnel gate
  - Proposed swing gate for vehicle access



REFER TO DRAWING REF: TOR-TV-XX-ZZ-DR-L-P008 [SHRUB PLANTING 3 OF 5]

Notes/Revisions	Date	Author
C	31/03/2022	DL
D	04/04/2022	DL
E	17/02/2023	MFP
F	21/03/2023	NME

Tees Valley  
Viridor

Shrub planting 2 of 5 - Planning

Status:	For Planning	Drawn by:	NME	Checked by:	RB
Project Number:	227707	Scale:	@A1: 1:250	Date:	02/2023
Drawing Number:	TOR-TV-XX-ZZ-DR-L-P005	Revision:	F		

This map base was provided to Viridor Tees Valley Limited by the Tees Valley Energy Recovery Facility Contract Authority (comprising Darlington, Hartlepool, Middlesbrough, Redcar & Cleveland, and Stockton Utility Authorities and Durham County Council and Newcastle City Council) in 2020.

© Terence O'Rourke Ltd 2021 Do not scale from this drawing

**TERENCE O'ROURKE**

LONDON  
7 Haddon Street  
London W1B 4BD

BIRMINGHAM  
Enterprise House 115 Edmund Street  
Birmingham B3 2JU

BOURNEMOUTH  
Everdane House Downsleigh Road  
Bournemouth BH7 7DU

TELEPHONE  
020 3664 0755  
www.torfd.co.uk