

5.0 DESIGN DEVELOPMENT

The design solution began to rest on the strong stacked arrangement of forms with a restrained colour palette to provide contrasting tonal variation.

An honest expression of simple forms and a restrained material palette present a coherent architectural response.

White



Light grey



Mid grey



Dark grey



5.0 DESIGN DEVELOPMENT

5.4 Visual Impact

The proposal was inserted to key viewpoints to analyse its impact on the context.

From each viewpoint shown, the proposed scheme blends successfully into the surrounding industrial context, with the building barely recognisable from the more distant views (1 and 2).



5.0 DESIGN DEVELOPMENT

5.5 Landscaping

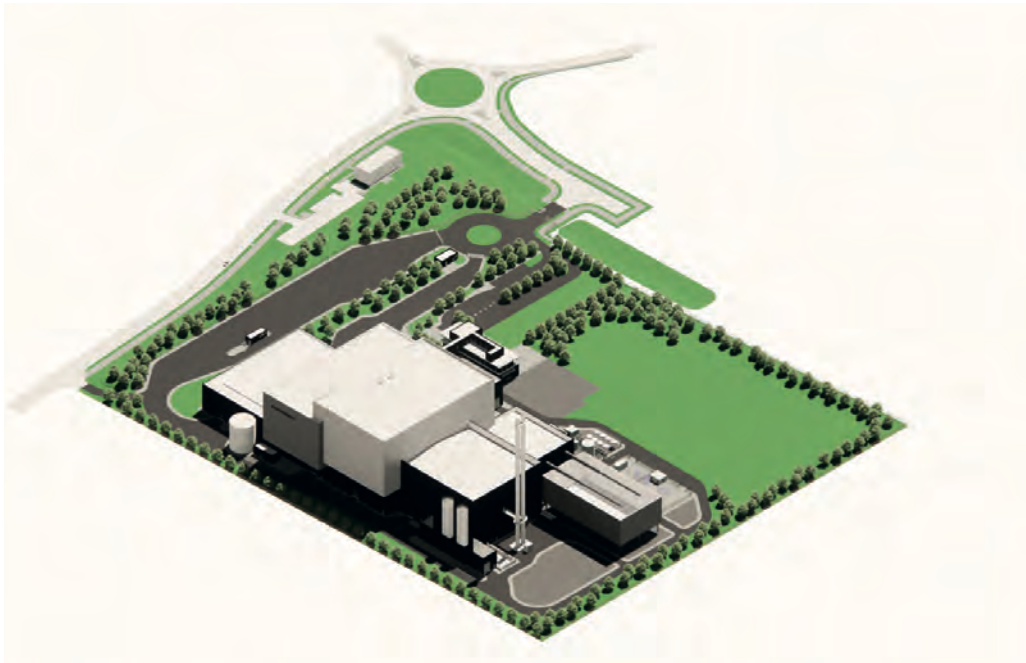
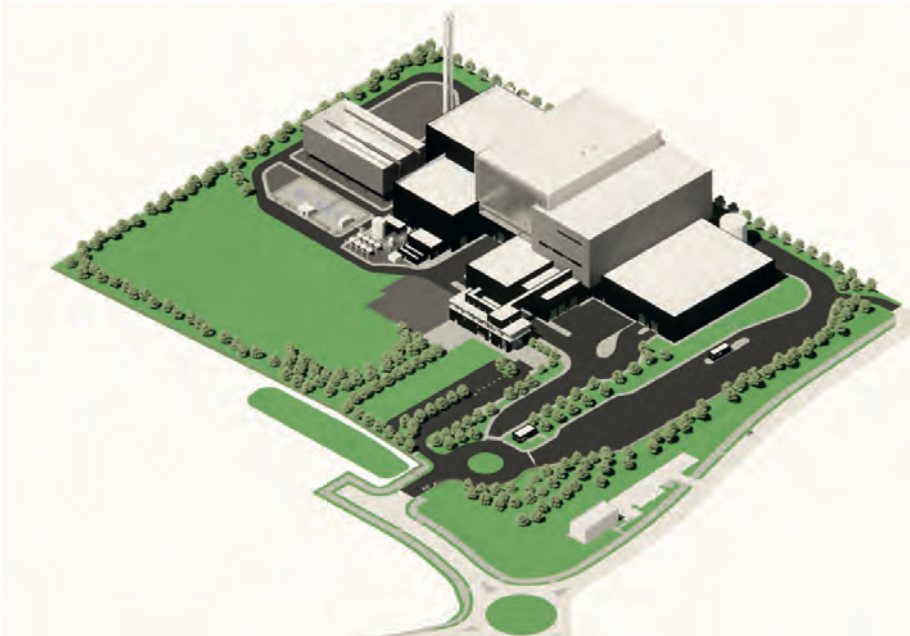
The introduction of landscaped bunds and strong planting to the periphery of the site are proposed to provide a degree of screening to the ground level activity, elevated to a height of 3m along the southern boundary. The bunds will be planted with native woodland planting and a rich wildflower grass mix chosen to provide a diverse species mix that will benefit birds, mammals and insects alike.

Ornamental shrub planting is proposed to the site entrance and locally around the staff & visitor car park and entrance perimeter.



5.0 DESIGN DEVELOPMENT

5.6 Proposed Site



6.0 MATERIALS & COLOURS

6.0 MATERIALS & COLOURS

6.1 Palette

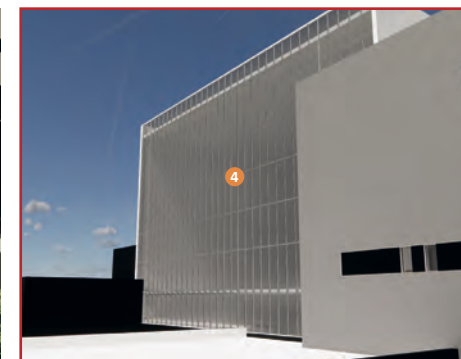
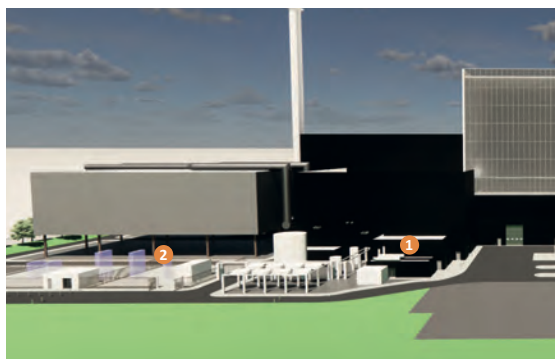
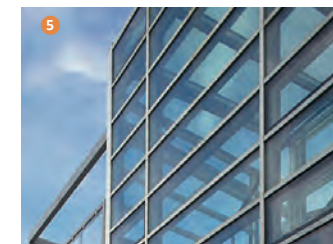
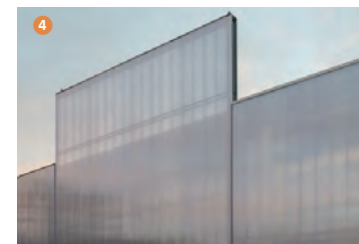
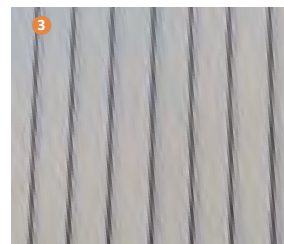
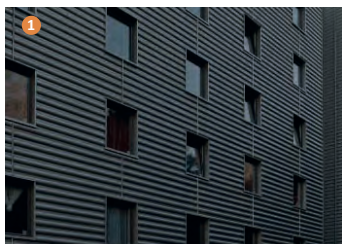
As discussed in previous sections, the material palette is light and crisp, with grey tones complementing each other across the various forms. Expression of the individual component parts is important, with the materials being applied with an appropriate degree of control and precision.

In conjunction with the building form, the material palette enhances and completes the composition with controlled variety to give due expression to the form without the final appearance losing its identity.

The relationship between the various materials has been given significant consideration. The interface of finishes at corners and edges will be met with precise detailing, ensuring the building maintains its pure form.

The chosen materials also propose a variety of textures and depths, providing further detail to the form. The palette ensures that the development makes a positive contribution to the overall appearance of the area by the use of good quality materials of appropriate scale, profile, finish, colour and proven weathering ability.

- 1 Deep profiled external sheet metal cladding laid with profile running horizontally on secondary cold rolled sheeting rails- colour- Black
- 2 Deep profiled external sheet metal cladding laid with profile running horizontally on secondary cold rolled sheeting rails- colour- Mid Grey
- 3 Deep profiled external sheet metal cladding laid with profile running vertically on secondary cold rolled sheeting rails- colour- Grey
- 4 Translucent polycarbonate cladding system over cold rolled sheeting rails
- 5 Polyester powder coated (PPC) aluminium framed glazed curtain walling system



7.0 THE PROPOSED SCHEME

7.1 Scheme Drawings - Site/Roof Plan

- 1. Electrical & Workshop
- 2. Tipping Hall
- 3. Fuel Storage Bunker
- 4. Boiler House
- 5. Flue Gas Treatment (FGT) Hall
- 6. Stack
- 7. Lime Storage Silos / Dosing *
- 8. Fire Water Tank & Pumphouse
- 9. Emergency Diesel Generator (EDG)
- 10. Vehicle Queuing Bays
- 11. Air Pollution Control residues (APCr) Storage & Loadout
- 12. Admin Block - Reception, Offices and Visitors
- 13. Bottom Ash Storage Hall
- 14. Air Cooled Condensers (ACC)
- 15. Turbine Hall
- 16. CCUS Future Expansion Area A
1,699 m²
- 17. CCUS Future Expansion Area B (or other future provision)
10,301 m²
- 18. Contractors compound for shutdown
- 19. Combined Heat & Power (CHP) Building
- 20. Substation/Transformer
- 21. Demin Water Tank
- 22. Landscape & Ecology
- 23. SuDS/Wetland Area
- 24. Security Control & Driver & Crew Welfare Facility
- 25. Weighbridge (3 In & 2 Out)
- 26. Waste Reception Area For Quarantined Waste and Contaminants
- 27. Staff & Visitor Car Parking
- 28. Rainwater Pit (roofs)
- 29. Generator Step-up Transformers
- 30. Diesel & Ammonia Bund
- 31. Fin Fan Coolers
- 32. Laboratory *
- 33. In/Over Bunker Shredder *
- 34. Effluent Treatment Pit
- 35. Recycled Water Tank *
- 36. Chemical Dosing Skid *
- 37. Water Treatment Plant
- 38. Compressed Air Station *
- 39. Weighbridge Offices / Traffic Control
- 40. Switchgear Transformer *
- 41. Feedwater Pumps *
- 42. CEMS
- 43. Hot Load Bay
- 44. Backload Area / Crane Maintenance *
- 45. Raw water pumps and tank *
- 46. Oil Tank
- 47. Crew Parking Bays
- 48. Outside Staff Area
- 49. Quarantine Bay *
- 50. Emergency Access

- EV Electric Vehicle Charging Parking Space
- CA Contract Authority Parking Space
- CC Car Club Parking Space
- Vis Visitor Car Parking

- Reserved Matters Boundary
- Outline Planning Boundary

- Gravel
- Grass
- Grasscrete
- Tarmac
- Concrete
- Paved Footpath



7.0 THE PROPOSED SCHEME

7.2 Scheme Drawings - Site Elevations



North

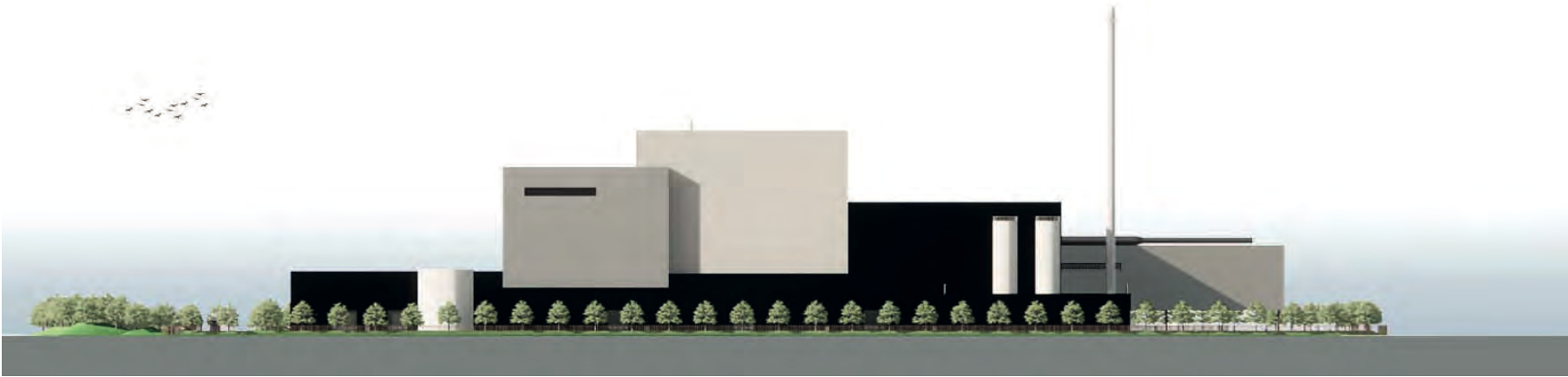


West

7.0 THE PROPOSED SCHEME



South



East

7.0 THE PROPOSED SCHEME

7.3 Visualisations



Elevated view from the roundabout (*Visualisation is for illustrative purposes only*).

7.0 THE PROPOSED SCHEME



Elevated view from the roundabout - evening (*Visualisation is for illustrative purposes only*).

7.0 THE PROPOSED SCHEME



Eye level view from the roundabout (*Visualisation is for illustrative purposes only*).