

## Advice : HSL-230331093252-321 DO NOT ADVISE AGAINST

**Your Ref:** R/2023/0247/OOM

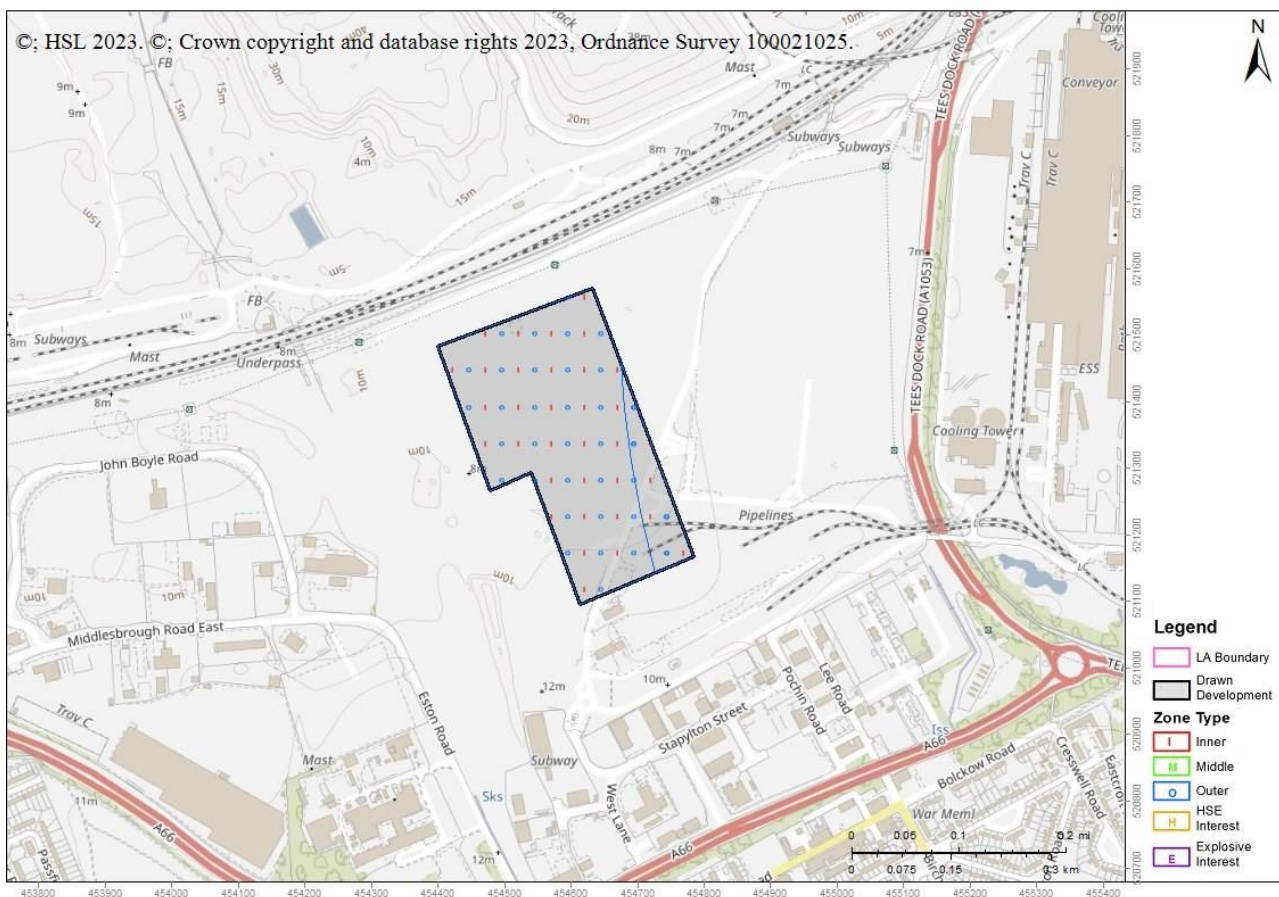
**Development Name:** OUTLINE APPLICATION (ALL MATTERS RESERVED) FOR THE CONSTRUCTION OF A BOTTOM ASH FACILITY AND ASSOCIATED DEVELOPMENT

**Comments:** GRANGETOWN PRAIRIE SITE

Land Use Planning Consultation with Health and Safety Executive [Town and Country Planning (Development Management Procedure) (England) Order 2015, Town and Country Planning (Development Management Procedure) (Wales) Order 2012, or Town and Country Planning (Development Management Procedure) (Scotland) Regulations 2013]

The Health and Safety Executive (HSE) is a statutory consultee for certain developments within the Consultation Distance of Major Hazard Sites/ pipelines. This consultation, which is for such a development and is within at least one Consultation Distance, has been considered using HSE's planning advice web app, based on the details input on behalf of Redcar and Cleveland (B).

**HSE's Advice: Do Not Advise Against, consequently, HSE does not advise, on safety grounds, against the granting of planning permission in this case.**



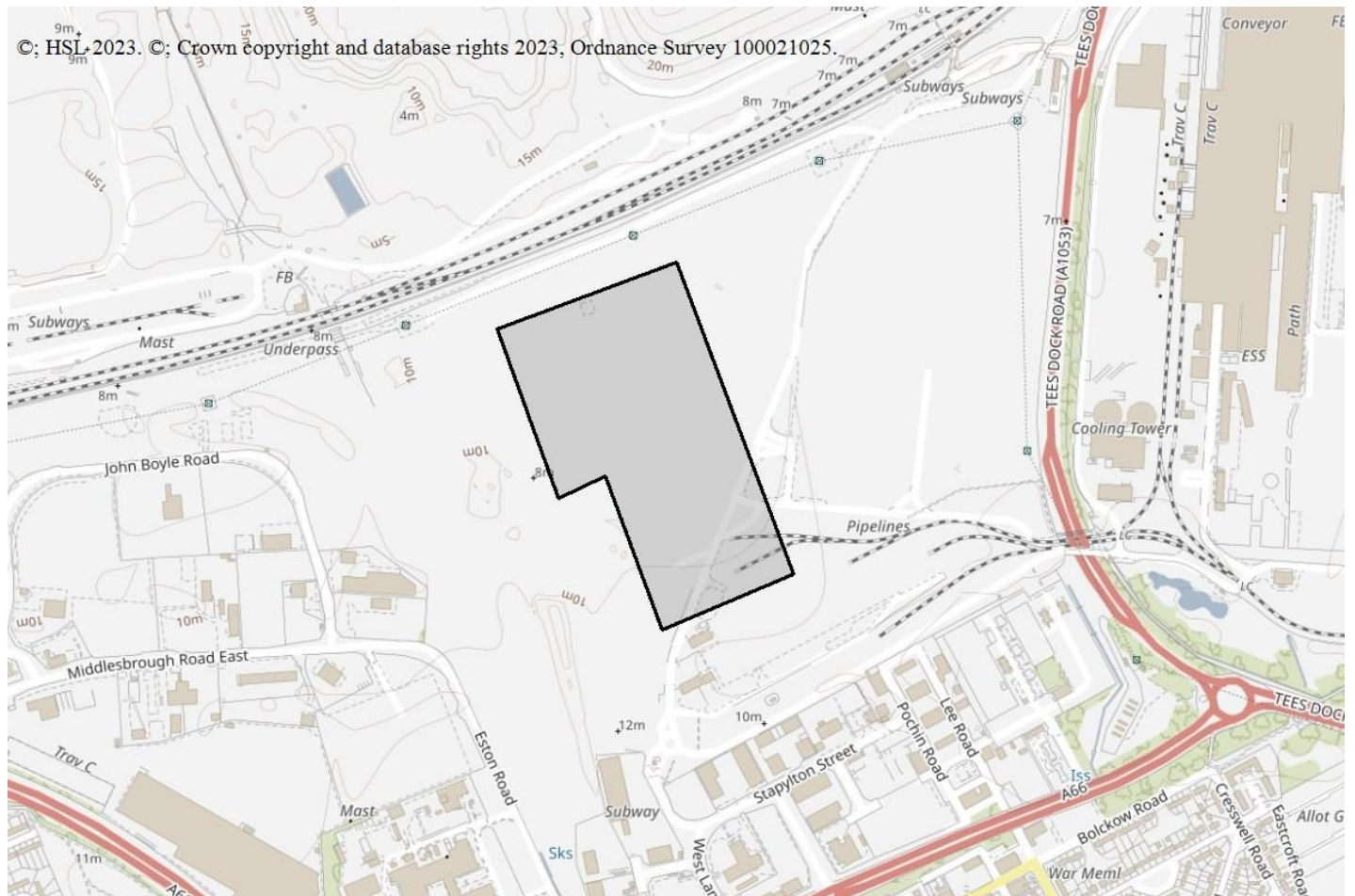
**Breakdown:**

Workplaces : Do Not Advise Against

Is it a workplace specifically for people with disabilities, e.g. sheltered workshops? No

Are there 100 or more occupants in any individual workplace building (that lie partly or wholly within a consultation distance)? No

Are there 3 or more occupied storeys in any workplace building (that lie partly or wholly within a consultation distance)? No



This advice report has been generated using information supplied by Debbie Campbell at Redcar and Cleveland (B) on 31 March 2023.

Note that any changes in the information concerning this development would require it to be re-submitted.